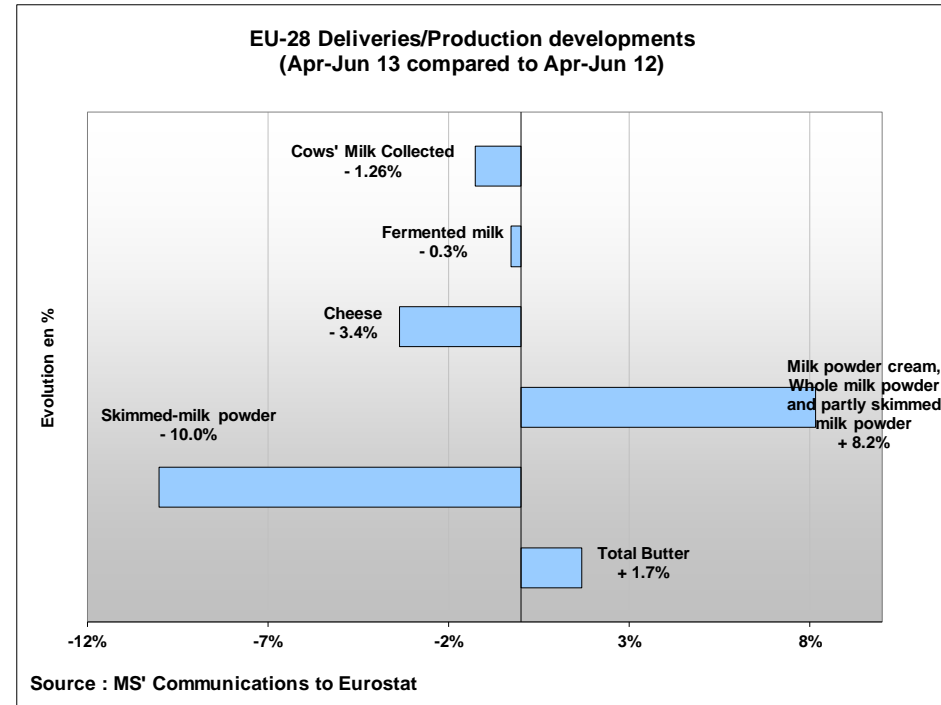
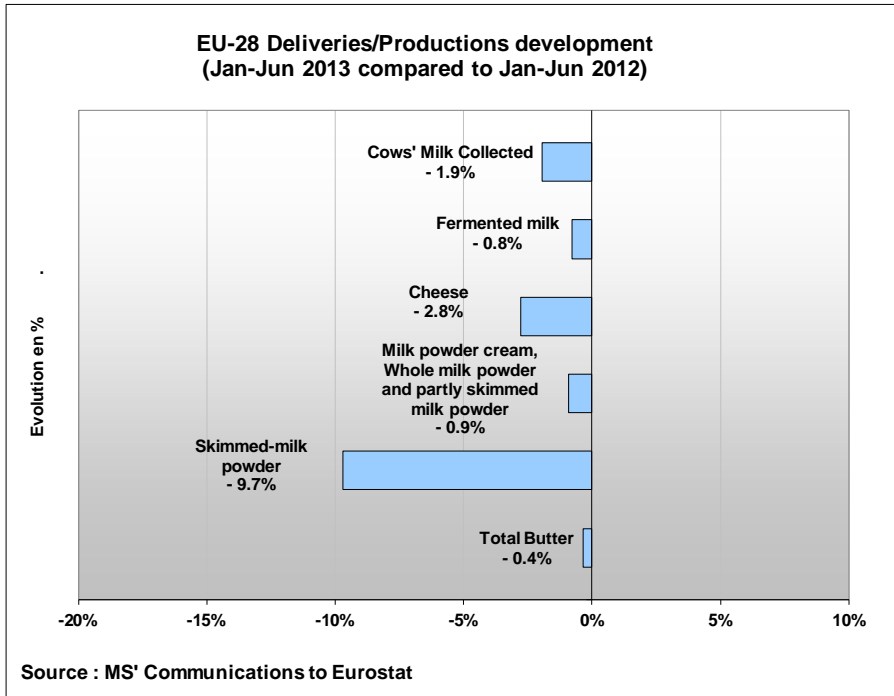




Milk Market Situation

Brussels, 29 August 2013

EU Productions

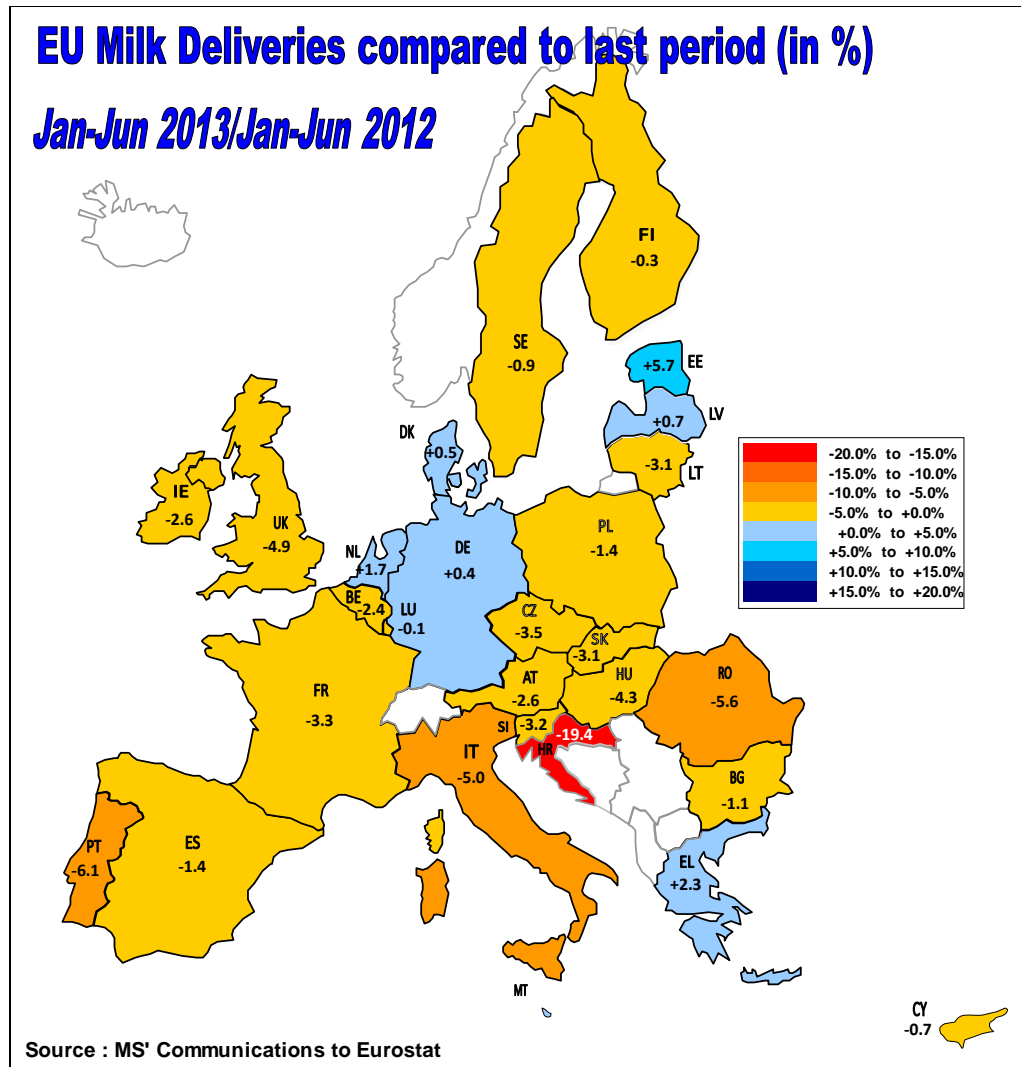


!!! Data from some Member States are confidential and are NOT included in this table !!!

June 2013 Data missing for EL and CY !

EU Milk Deliveries compared to last period (in %)

Jan-Jun 2013/Jan-Jun 2012

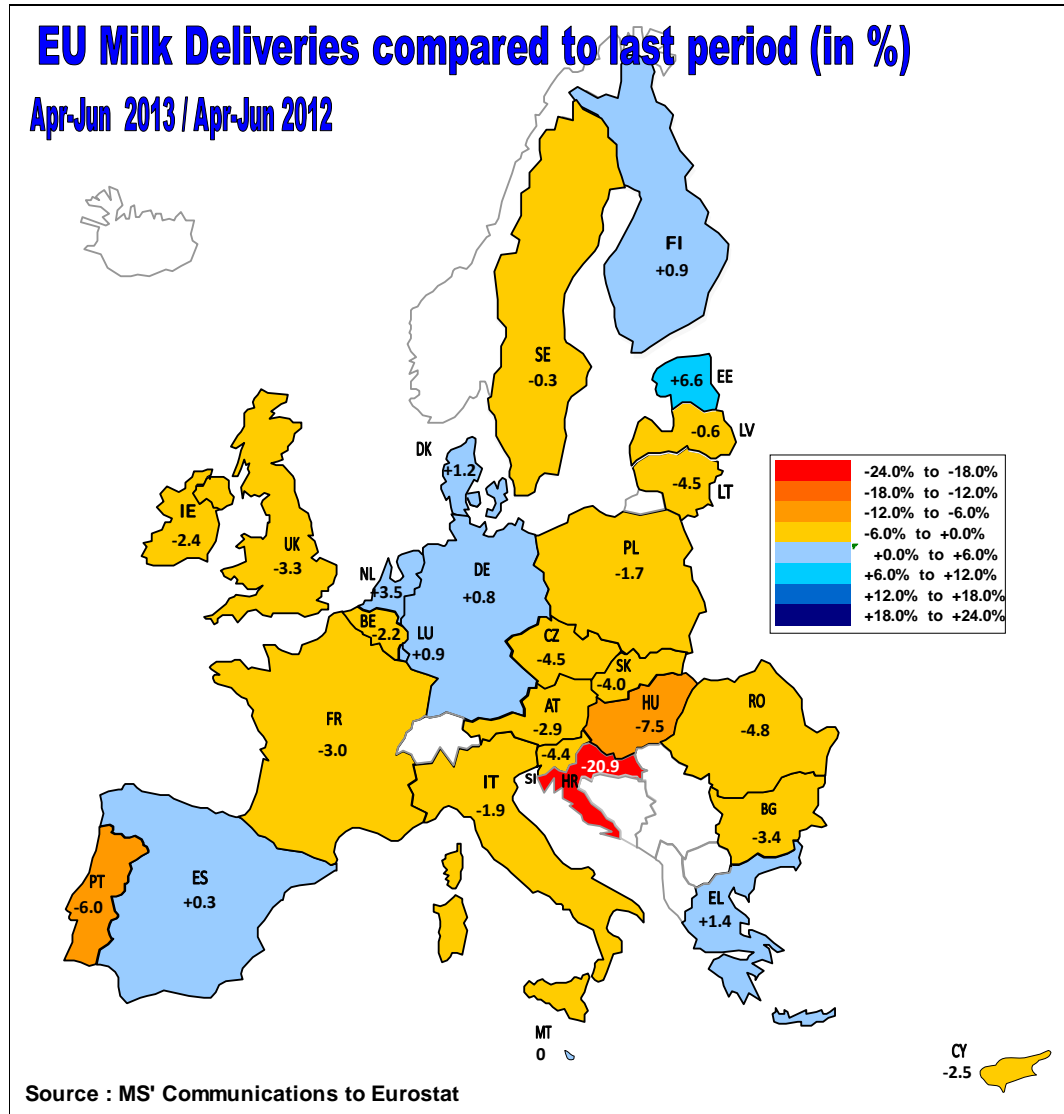


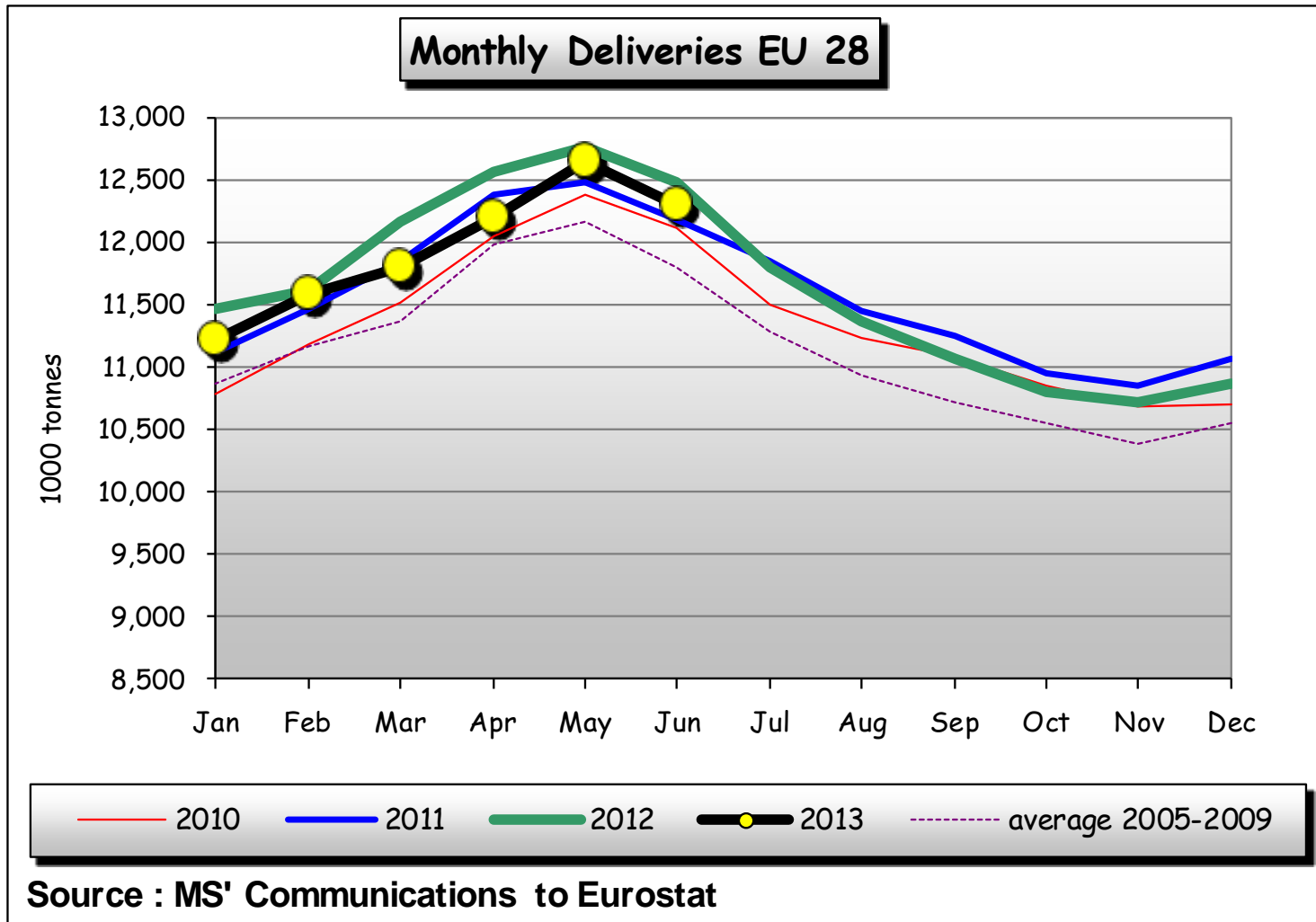


European
Commission

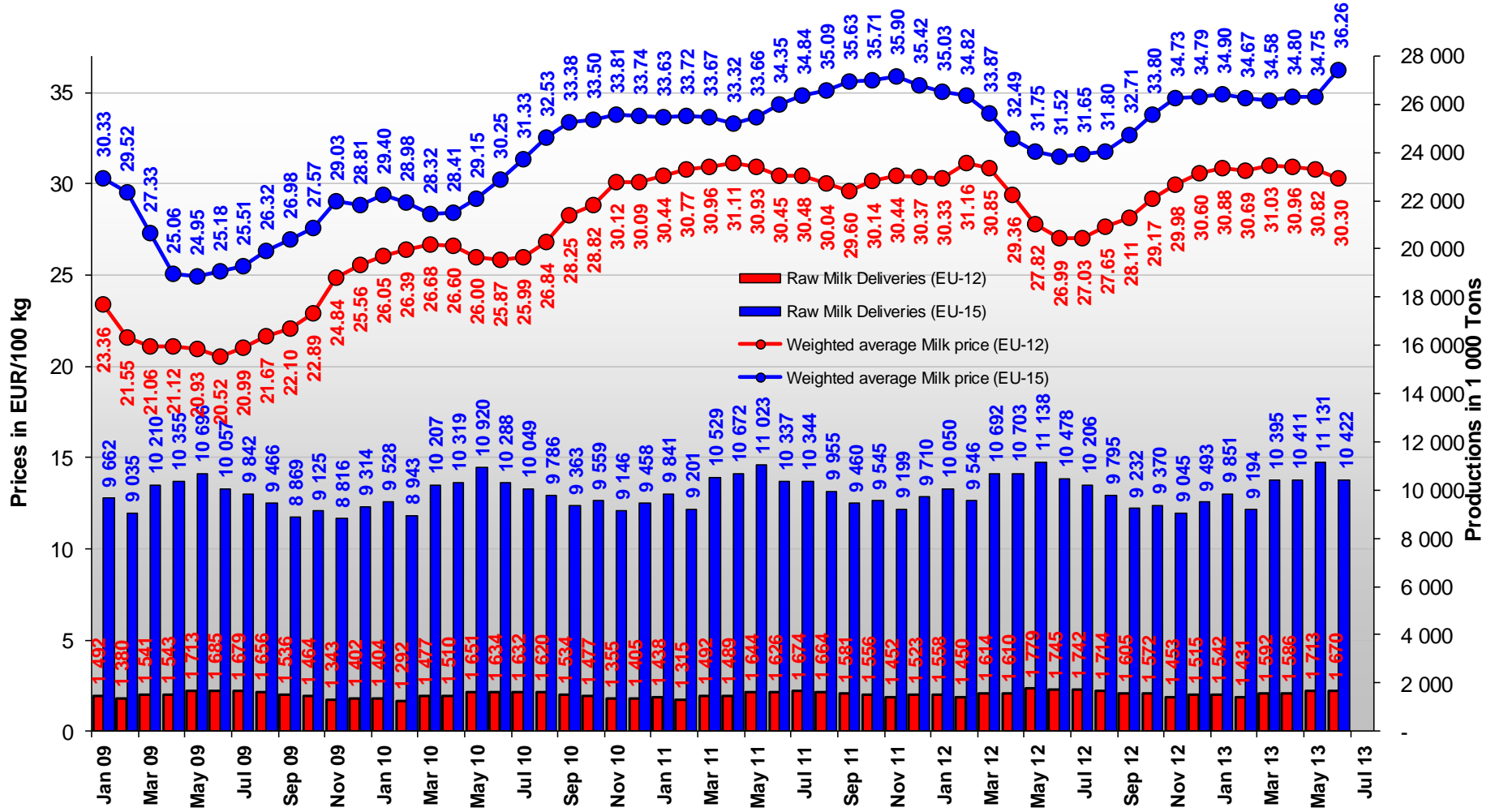
EU Milk Deliveries compared to last period (in %)

Apr-Jun 2013 / Apr-Jun 2012



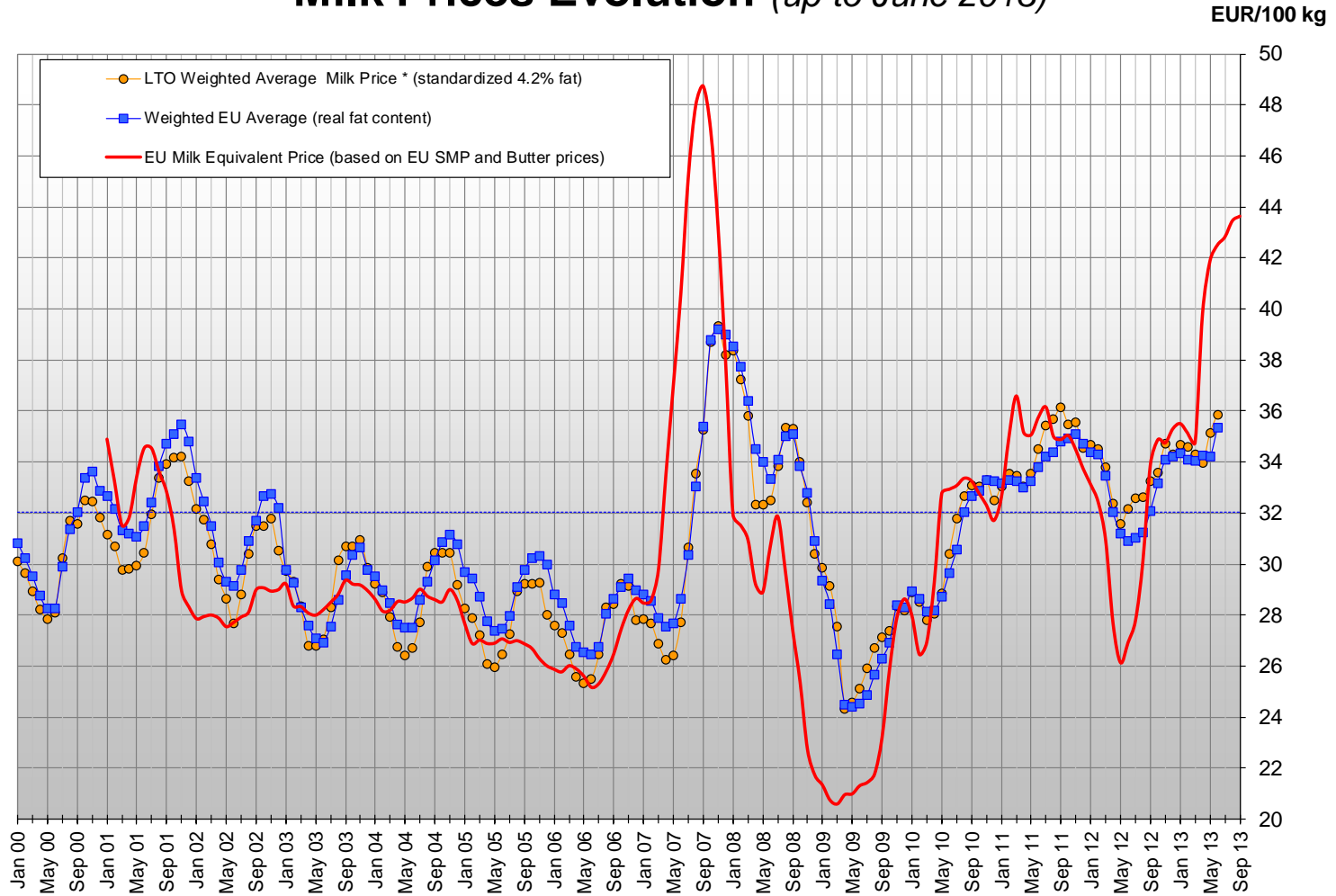


EU 15/12 Milk Deliveries and Prices



29 August 2013

Milk Prices Evolution (up to June 2013)



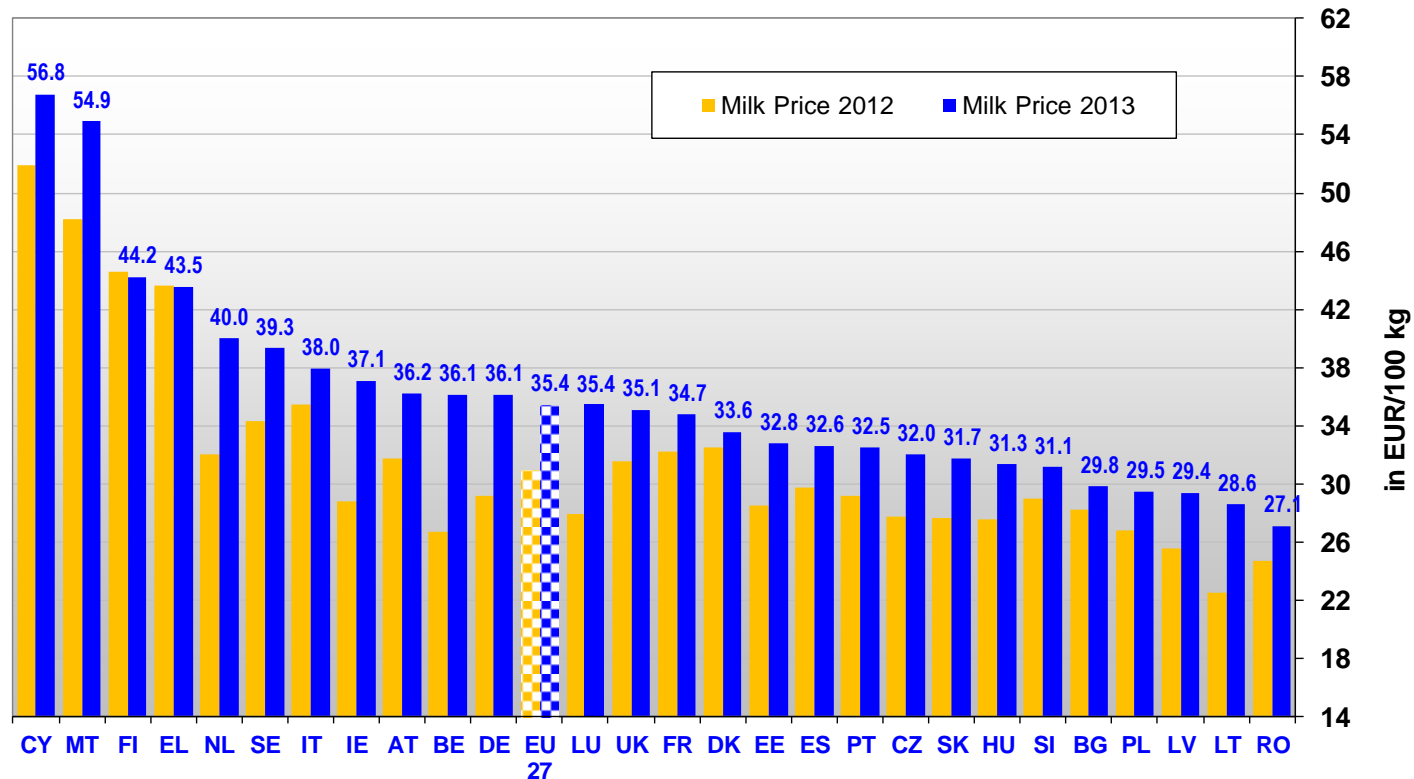
Source :MS' communications under reg. 562/2005 & 479/2010 + LTO : Land- en Tuinbouworganisatie Nederland



European
Commission

EU Milk Prices

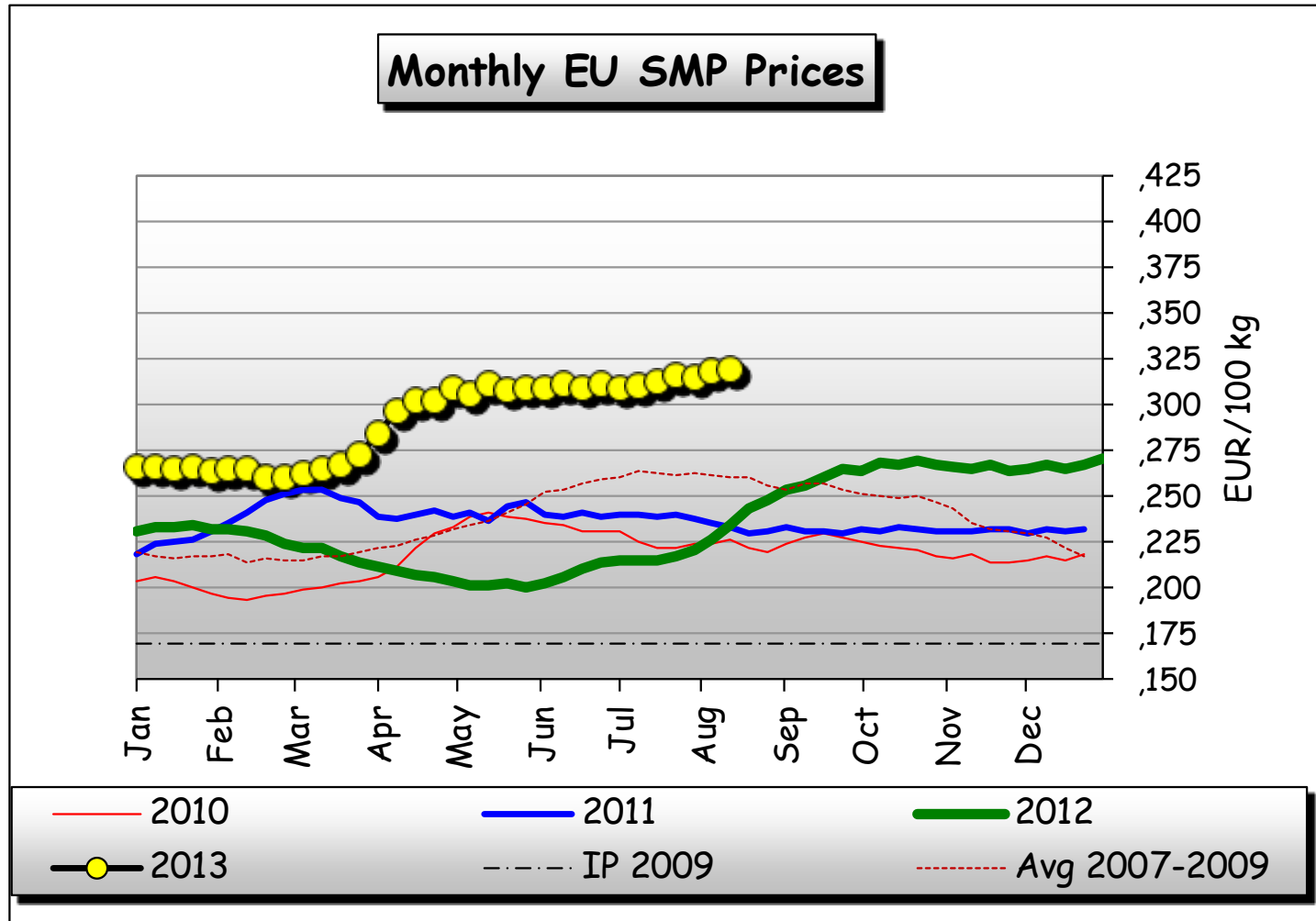
(June 2013 compared to June 2012)



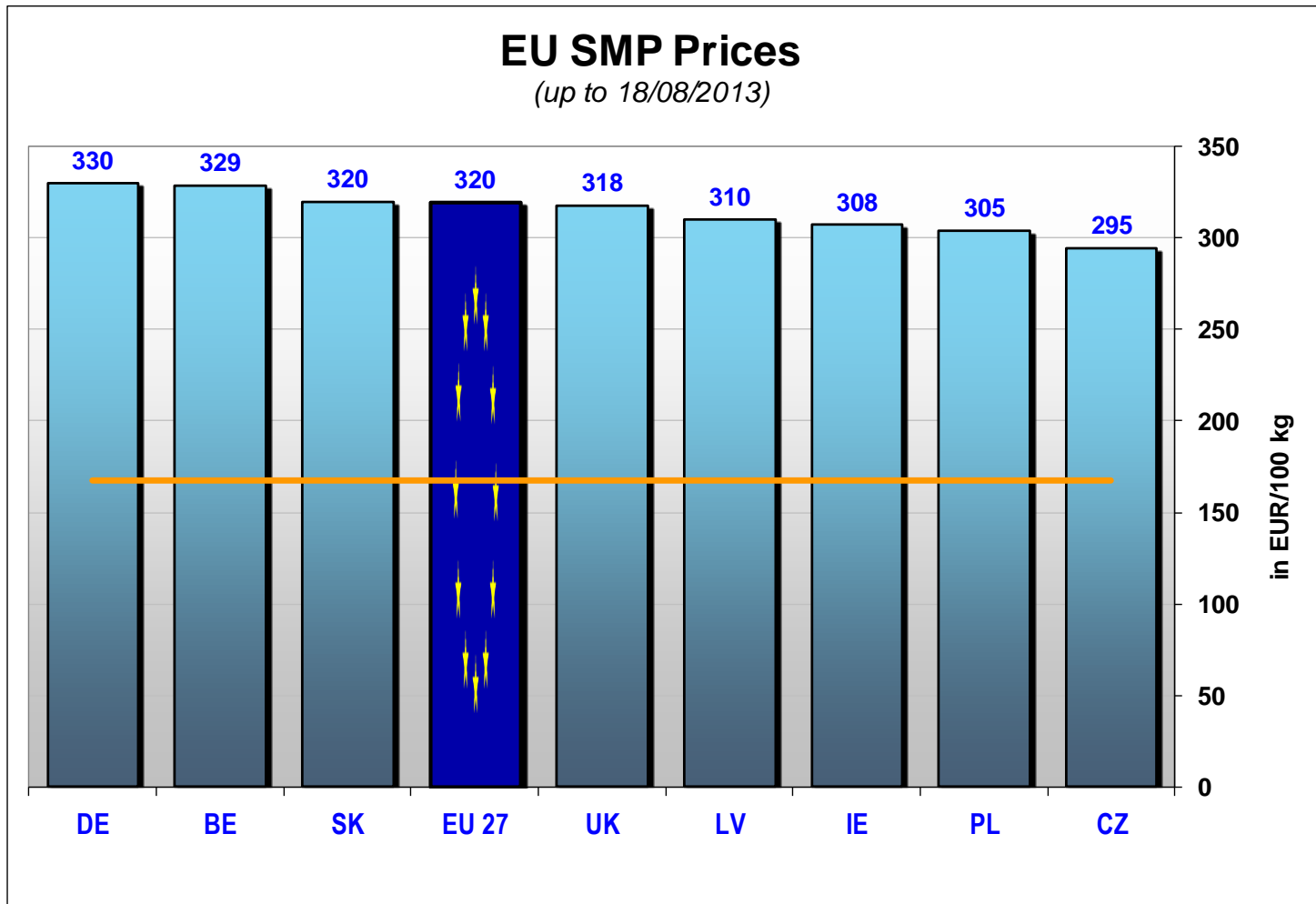
NB: The above national price averages are of mixed nature, some relate to standardised milk, others to milk with real fat and protein content, pending harmonisation under reg. 479/2010

Source: MS' communications under Reg. 479//2010

29 August 2013

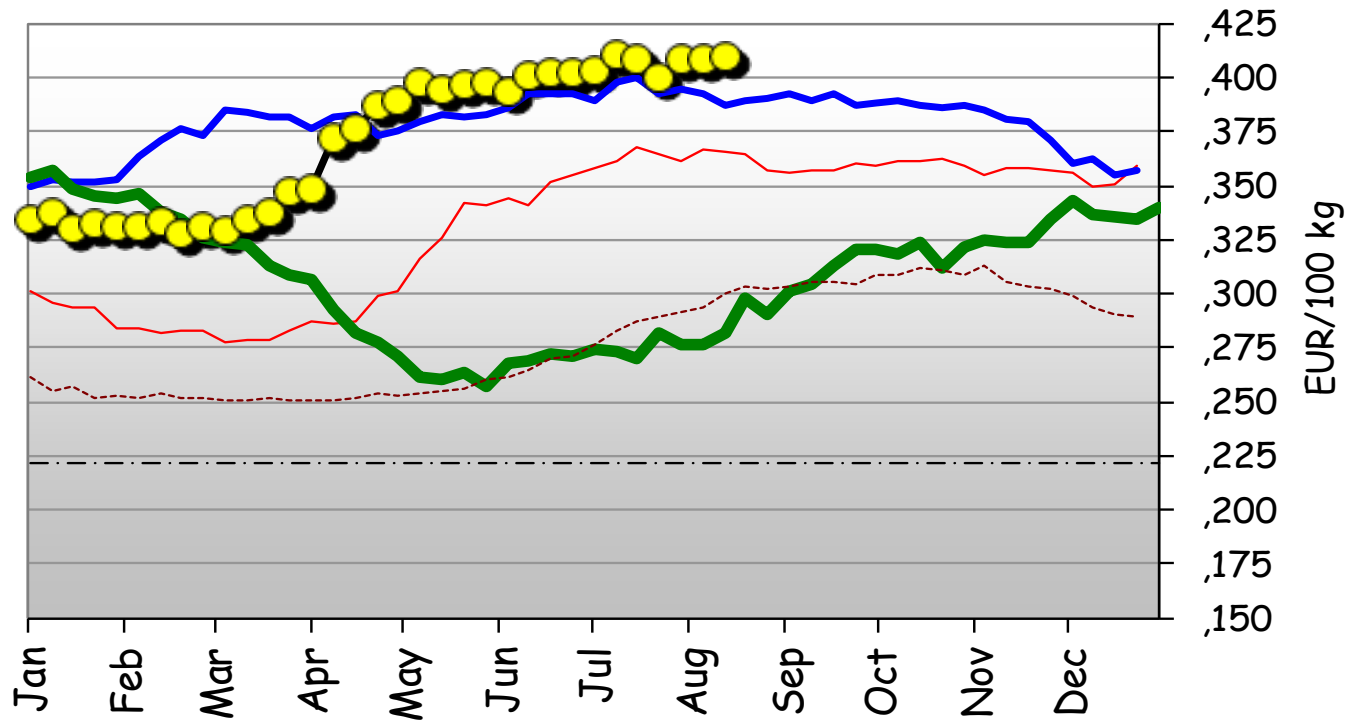


Source: MS' communications under Regs. 562/2005 and 479/2010

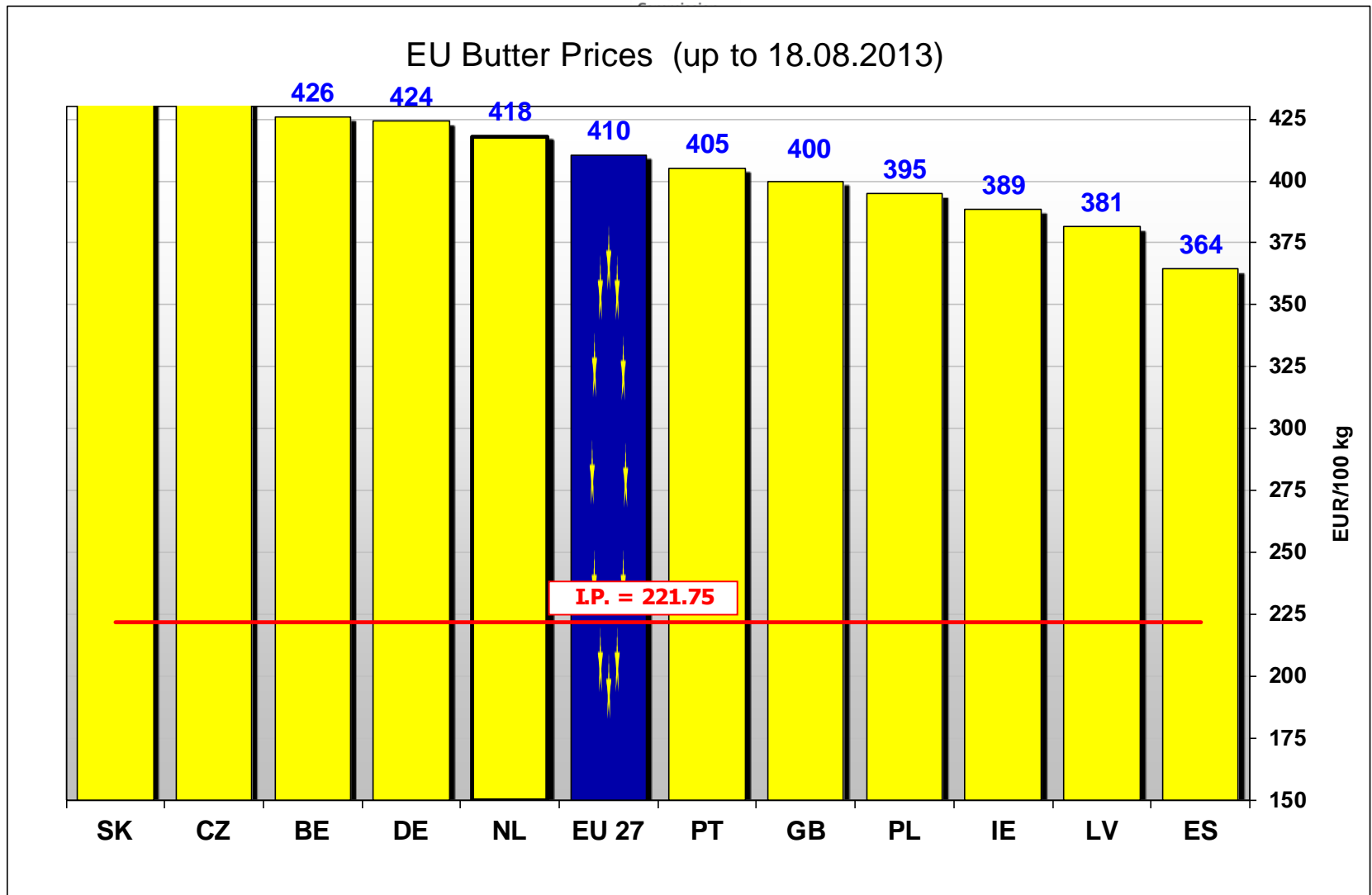


Source: MS' communications under reg. 479/2010

Monthly EU BUTTER Prices

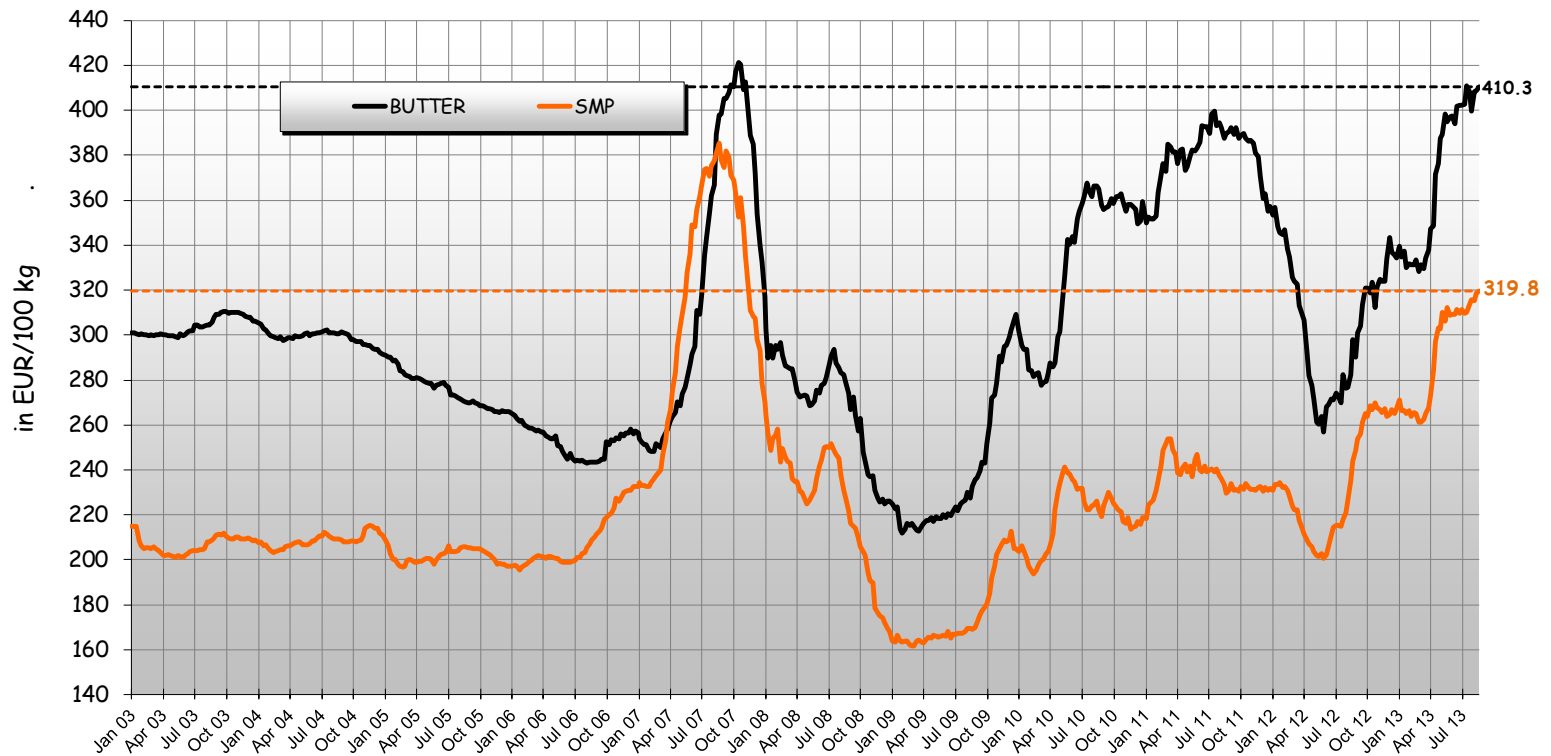


Source: MS' communications under Regs. 562/2005 and 479/2010



EU Quotations of Butter and SMP

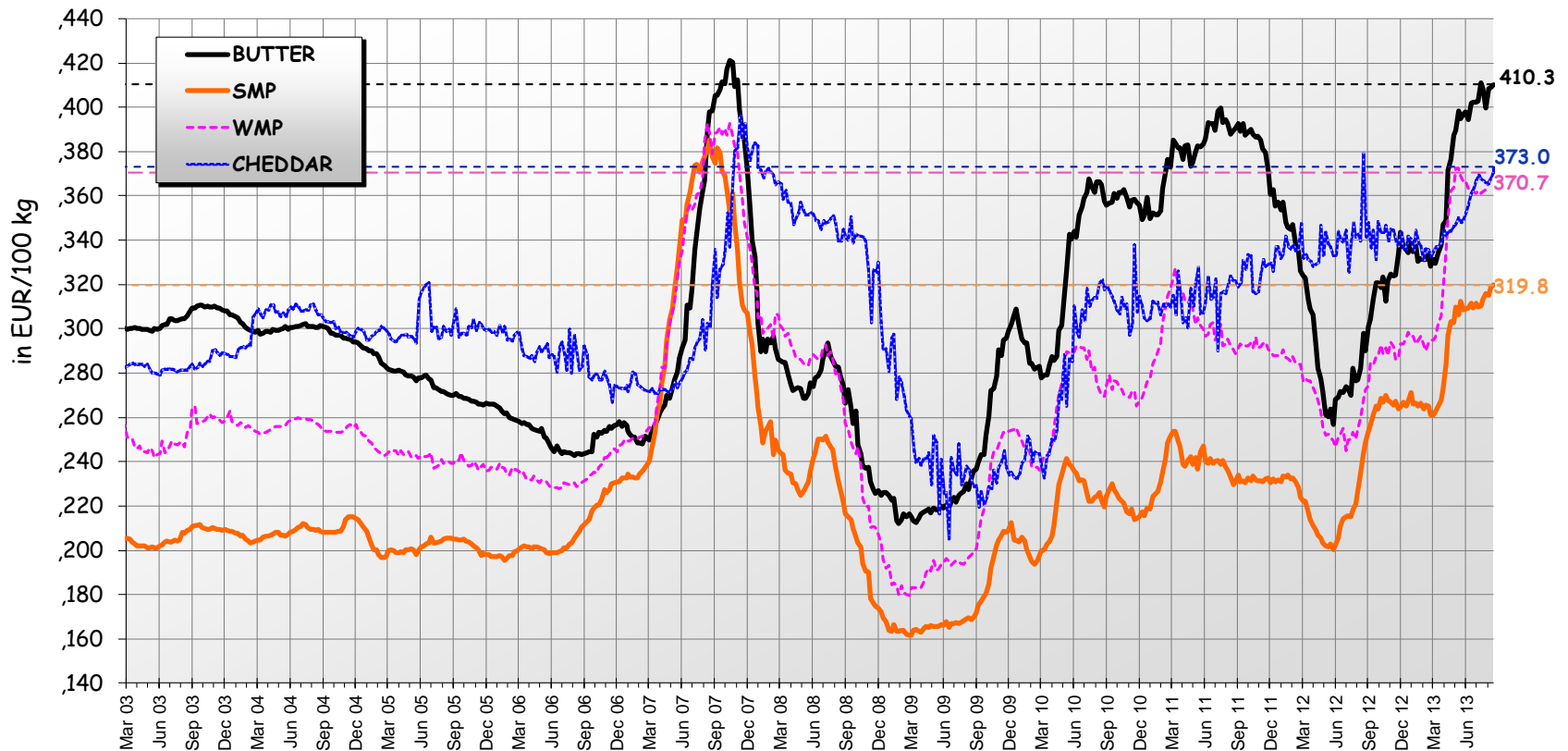
(EU average based on MS communication and weighted by production)



Source: MS' communications under reg. 562/2005 and 479/2010

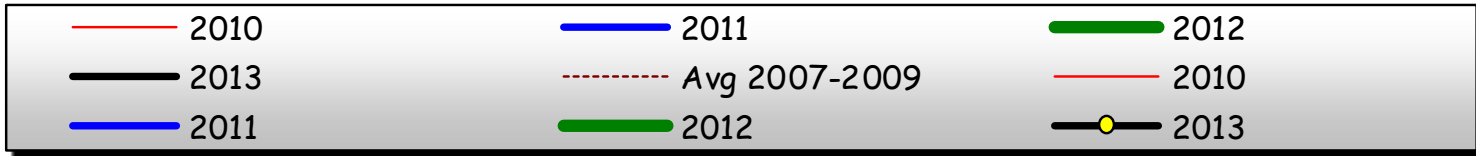
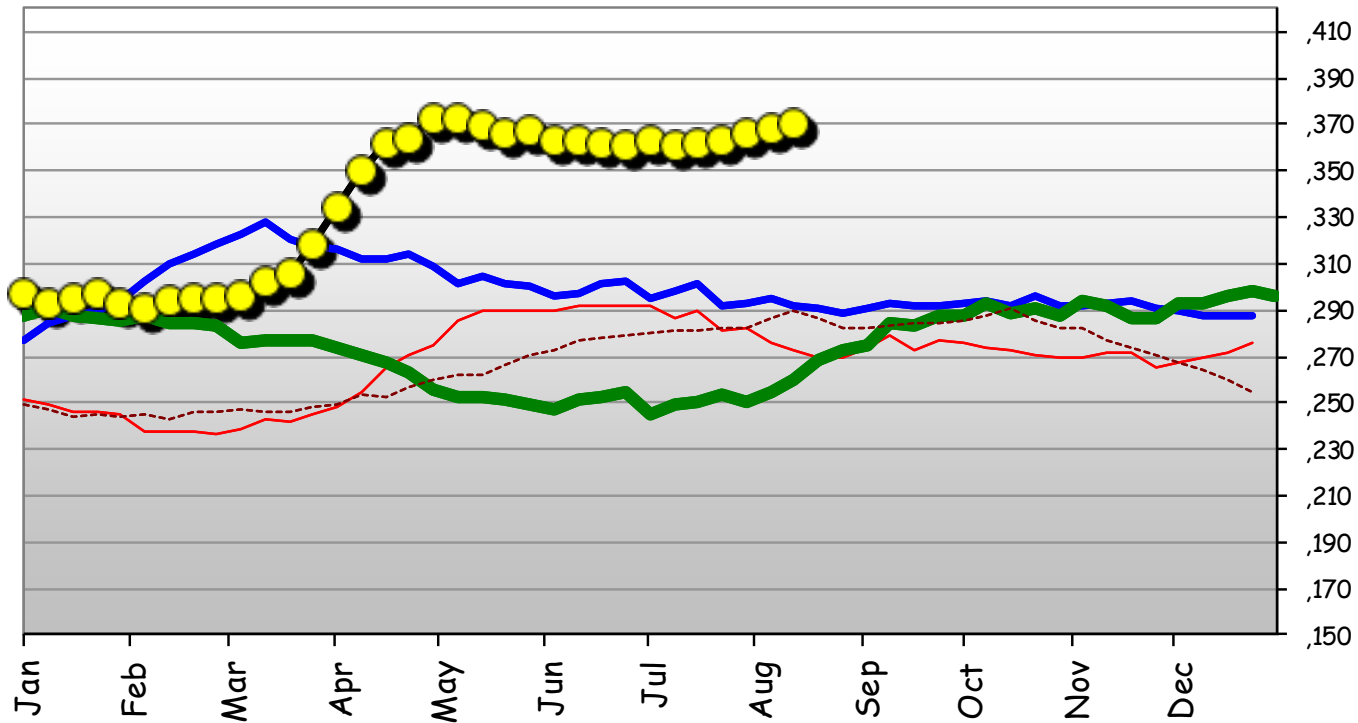
EU Dairy Quotations

(EU average based on MS communication and weighted by production)

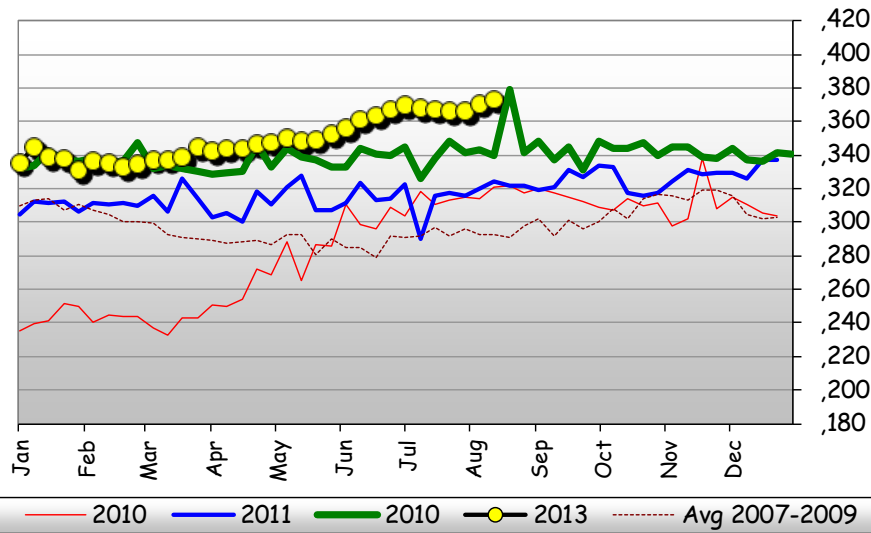


Source: MS' communications under reg. 562/2005 and 479/2010

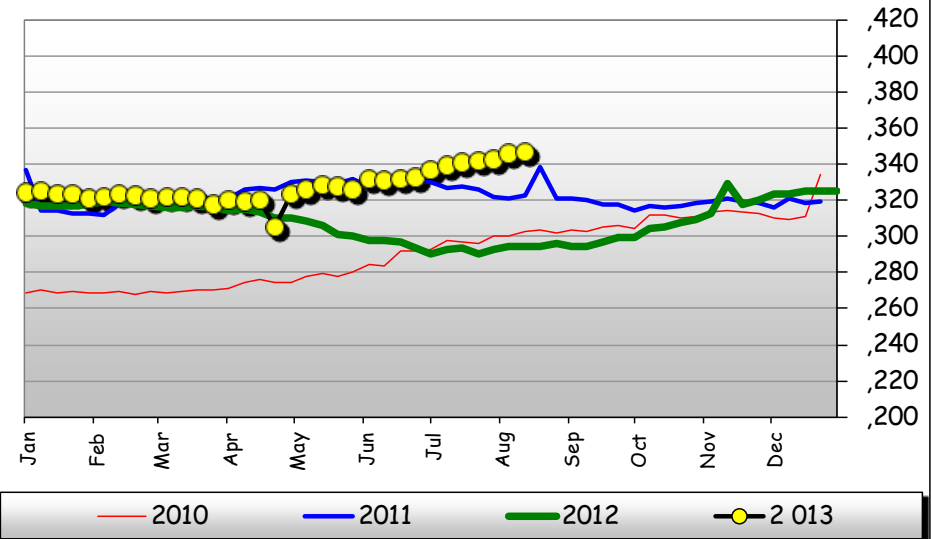
Monthly EU WMP Prices



Monthly EU CHEDDAR Prices

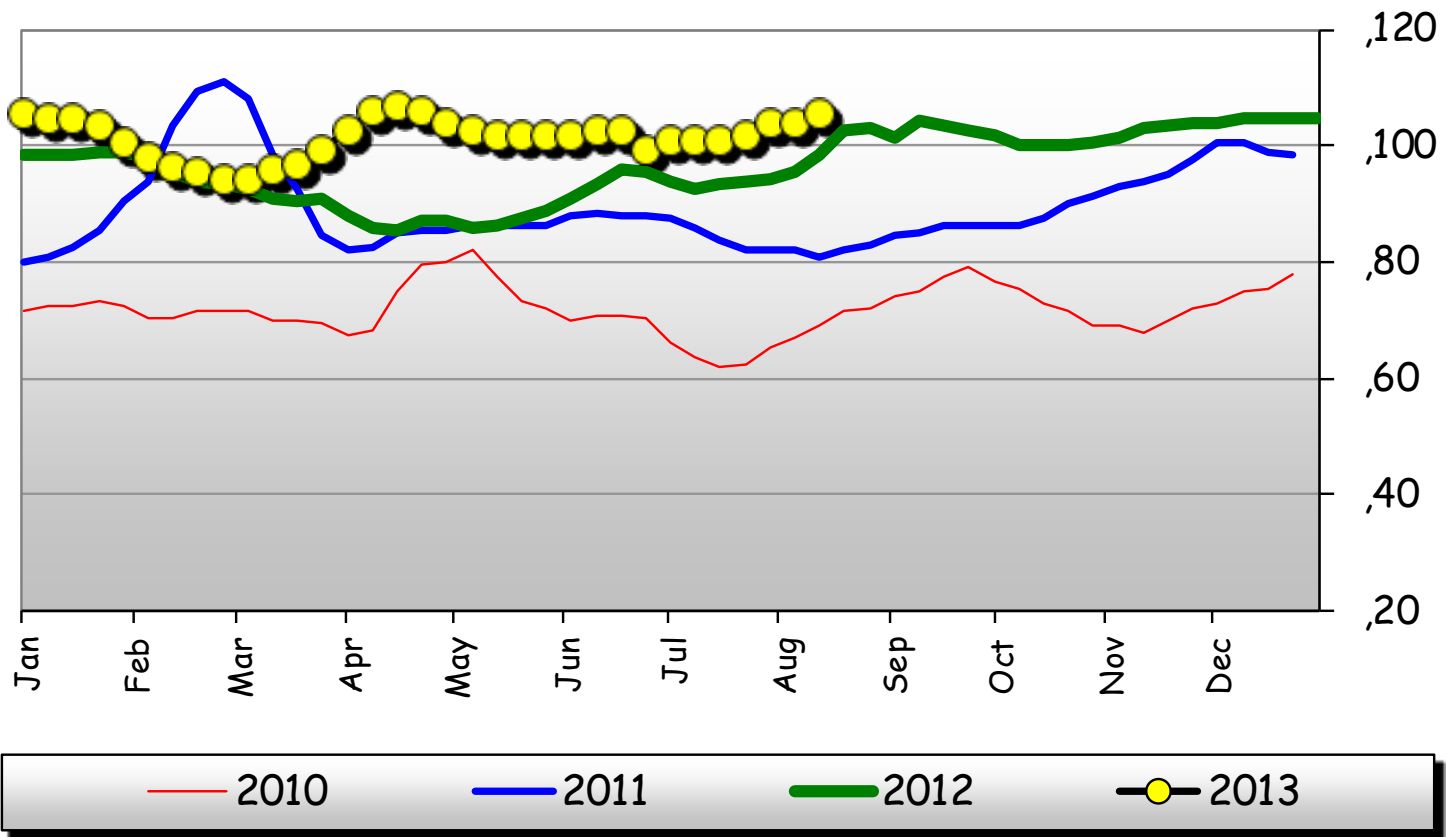


Monthly EU EDAM Prices



Source: MS' communications under Regs. 562/2005 and 479/2010

Monthly EU WheyPowder Prices



Source: MS' communications under Regs. 562/2005 and 479/2010

US Dollar

US dollar (USD)

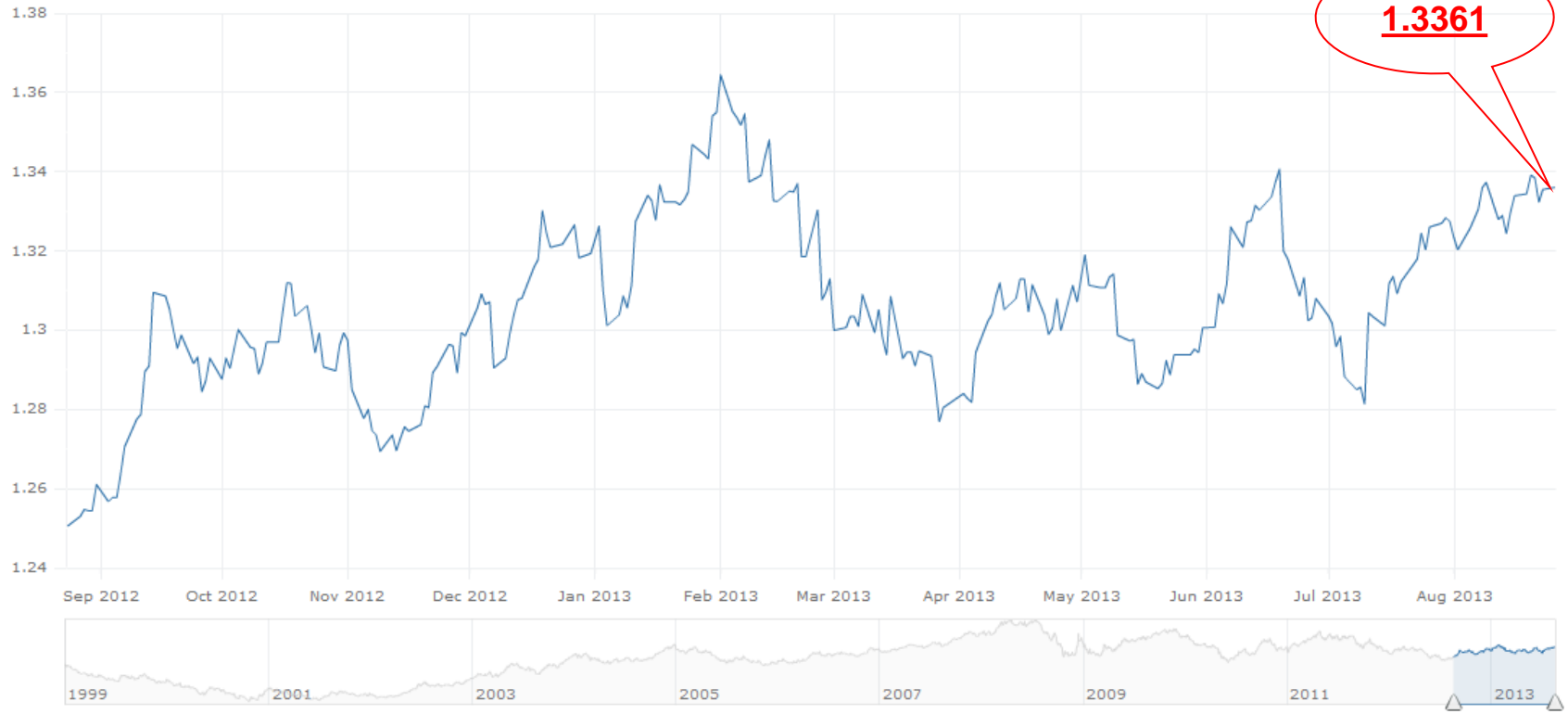
Latest (26 August 2013): **EUR 1 = USD 1.3361** +0.0006 (0.0%)

Date range: [1m](#) | [3m](#) | [6m](#) | [1y](#) | [2y](#) | [5y](#) | [10y](#) | [All](#)

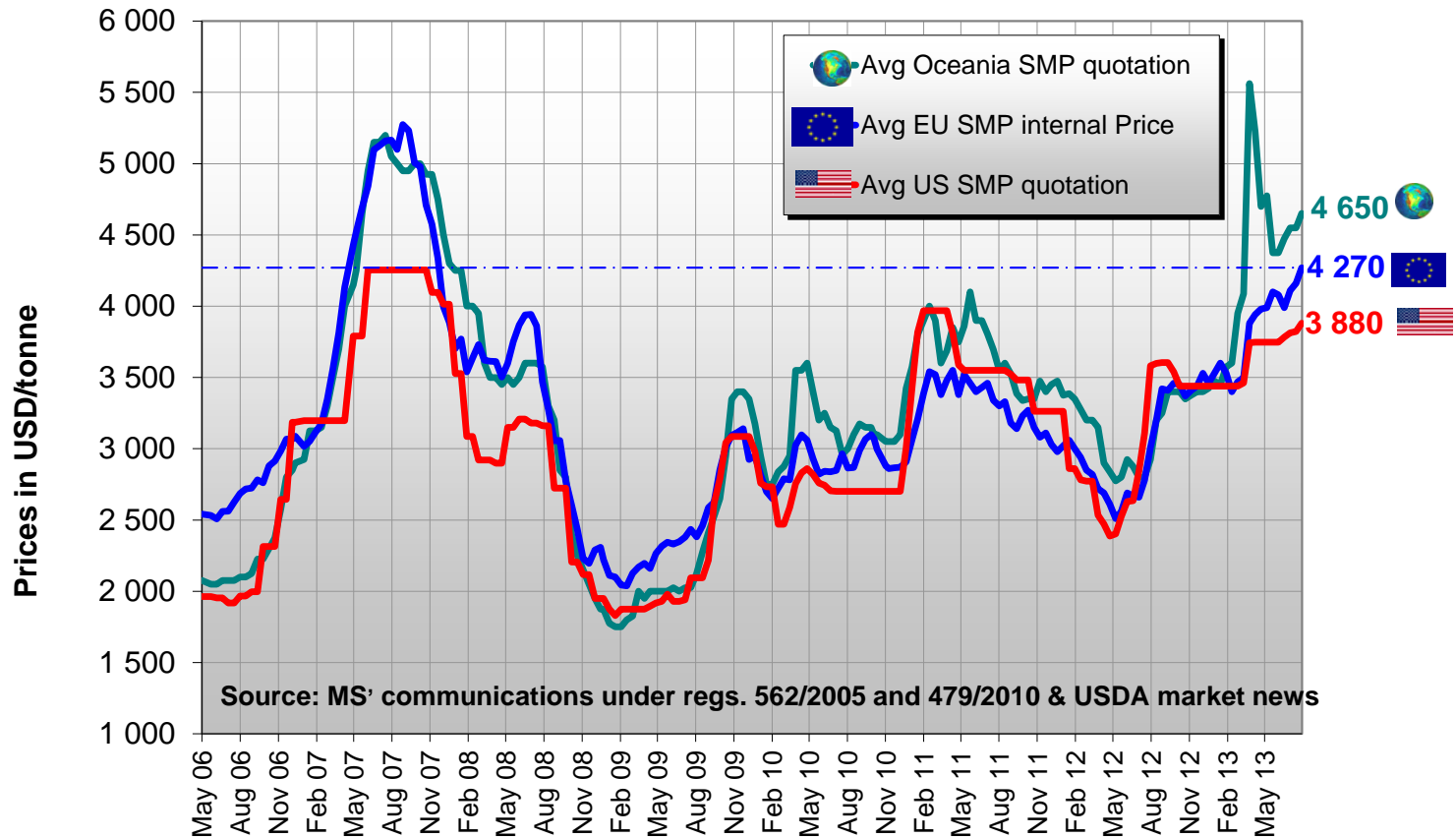
[See EUR vs. USD](#)

Change from 24 August 2012 to 26 August 2013 **+0.0854 (+6.8%)**

Minimum (24 August 2012): **1.2507** - Maximum (1 February 2013): **1.3644** - Average: **1.3064**



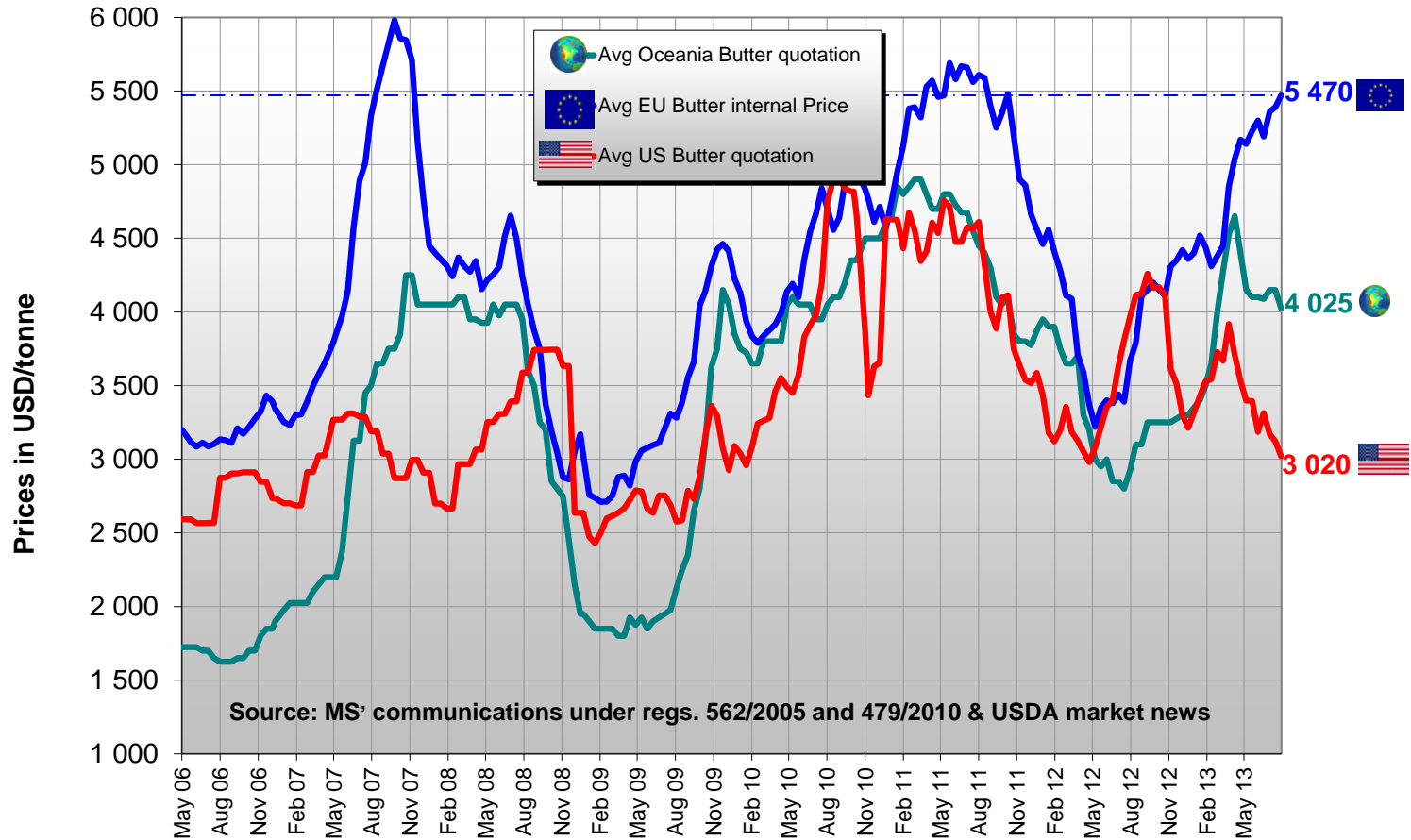
EU/US/Oceania Quotations of SMP



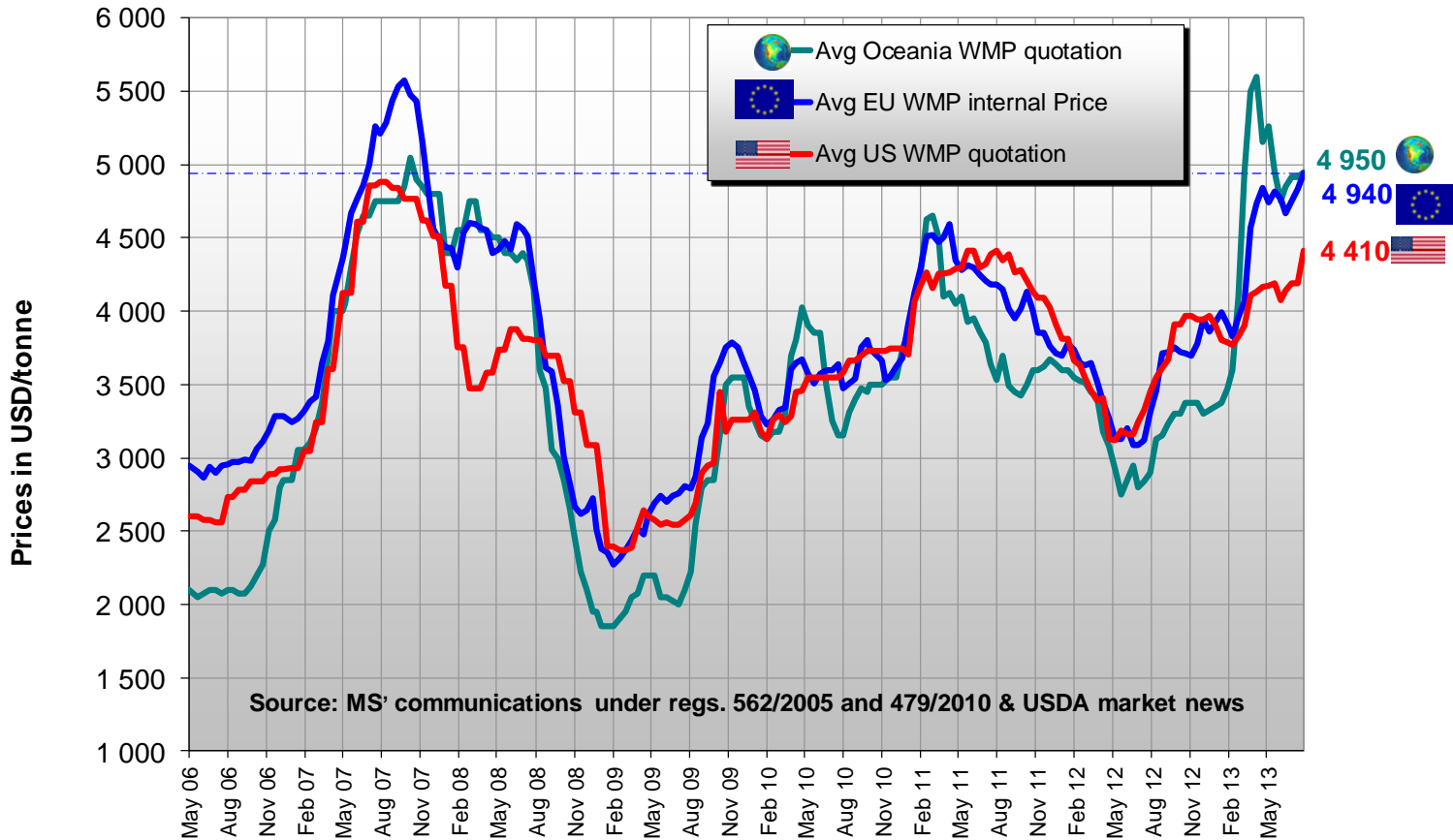


European
Commission

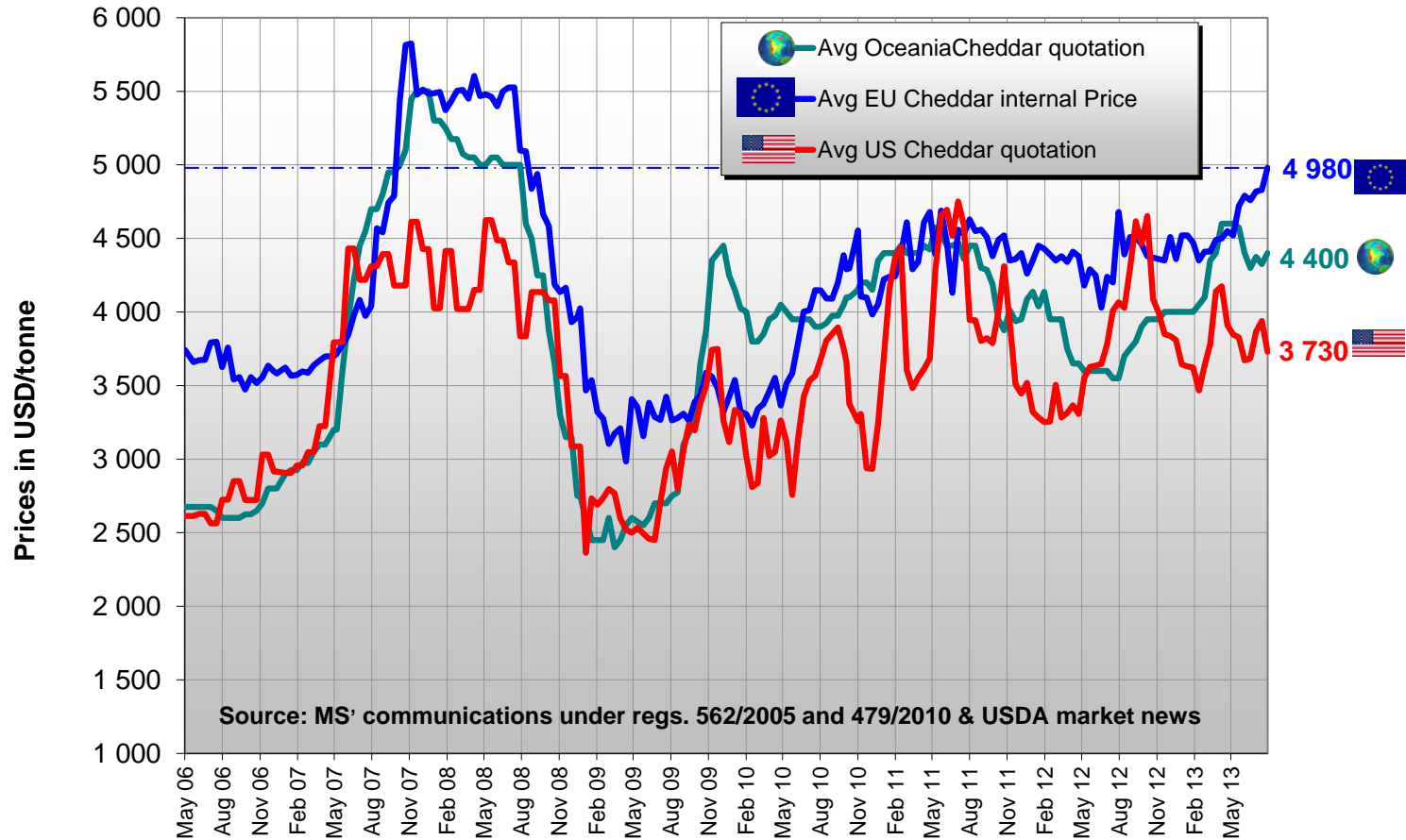
EU/US/Oceania Quotations of Butter



EU/US/Oceania Quotations of WMP

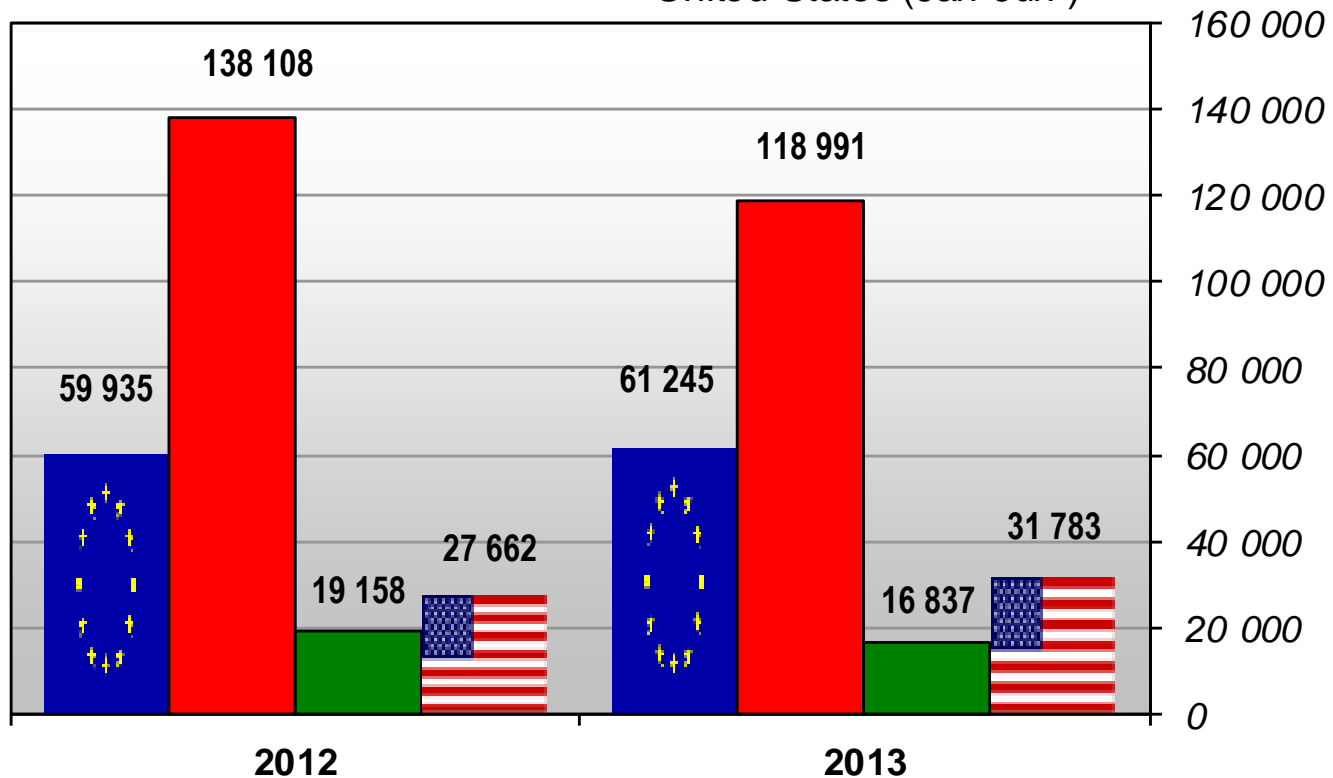


EU/US/Oceania Quotations of Cheddar



BUTTER Exports

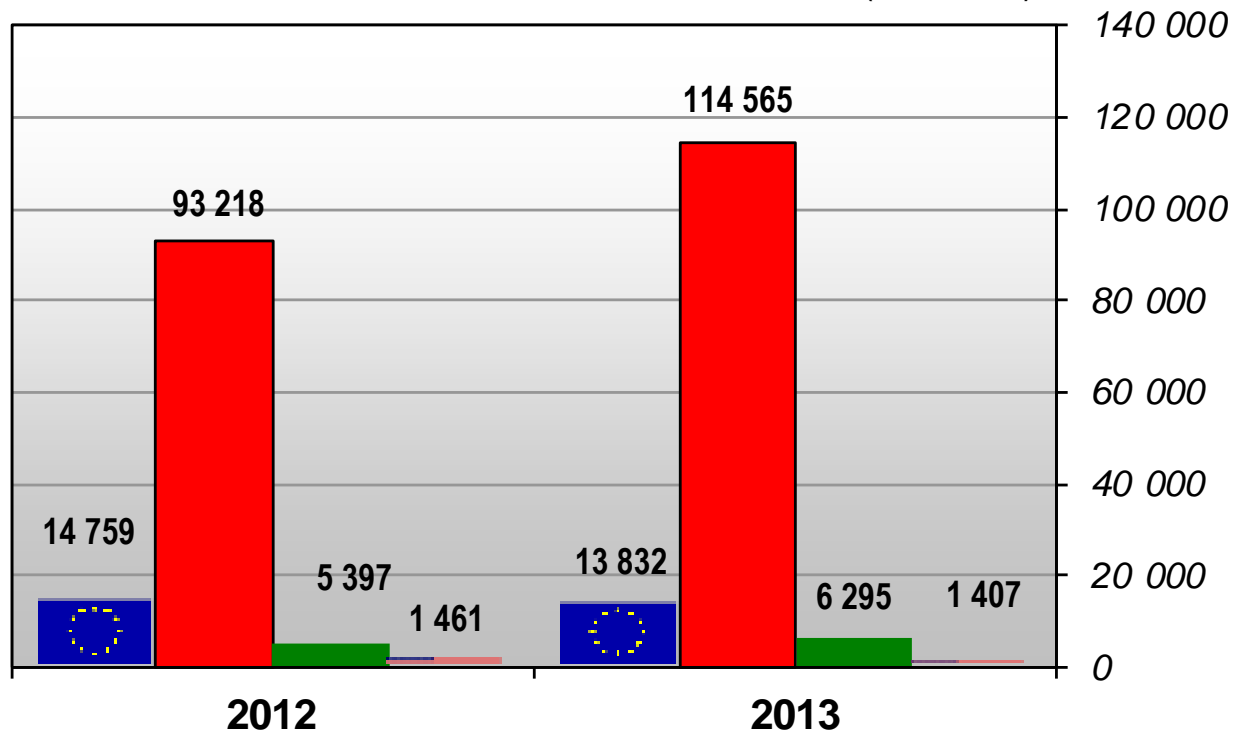
- EU-28 (Jan - Jun)
- New Zealand (Jan-Jun)
- Australia (Jan-Jun)
- United States (Jan-Jun)



Source: Eurostat Comext, Global Trade Information Service

BUTTEROIL Exports

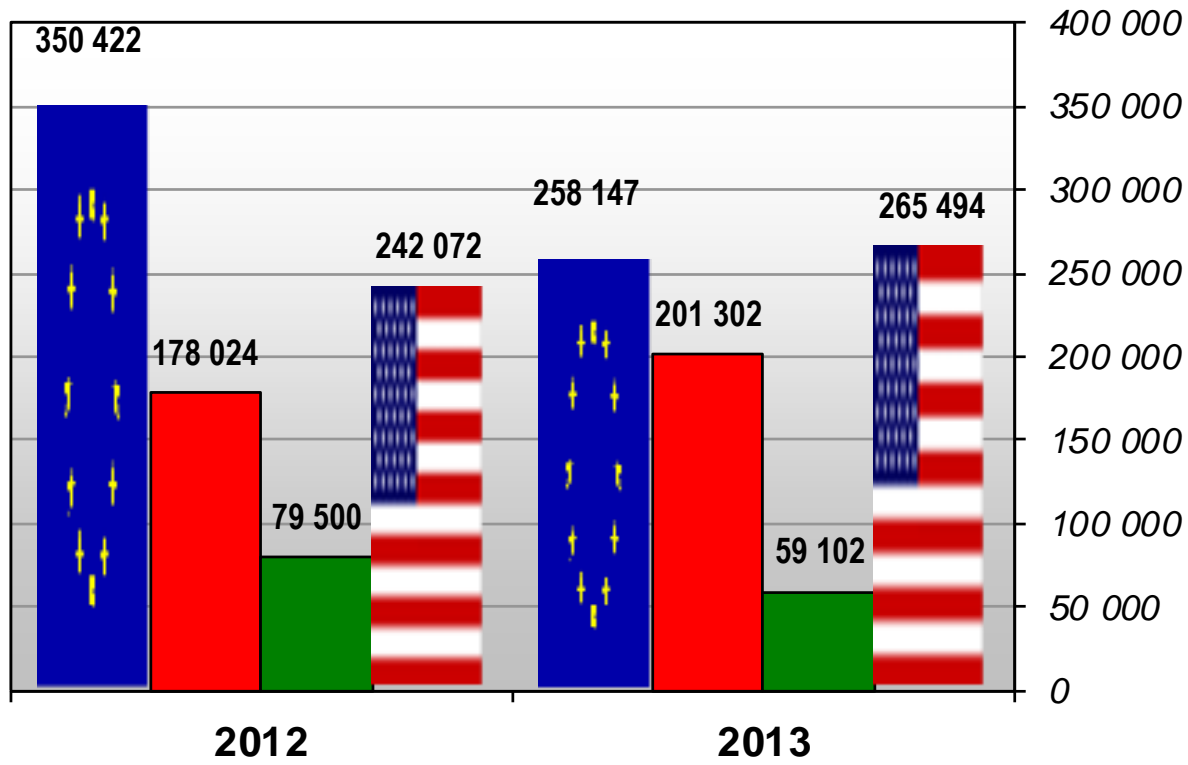
- EU-28 (Jan - Jun)
- New Zealand (Jan-Jun)
- Australia (Jan-Jun)
- United States (Jan-Jun)



Source: Eurostat Comext, Global Trade Information Service

SMP Exports

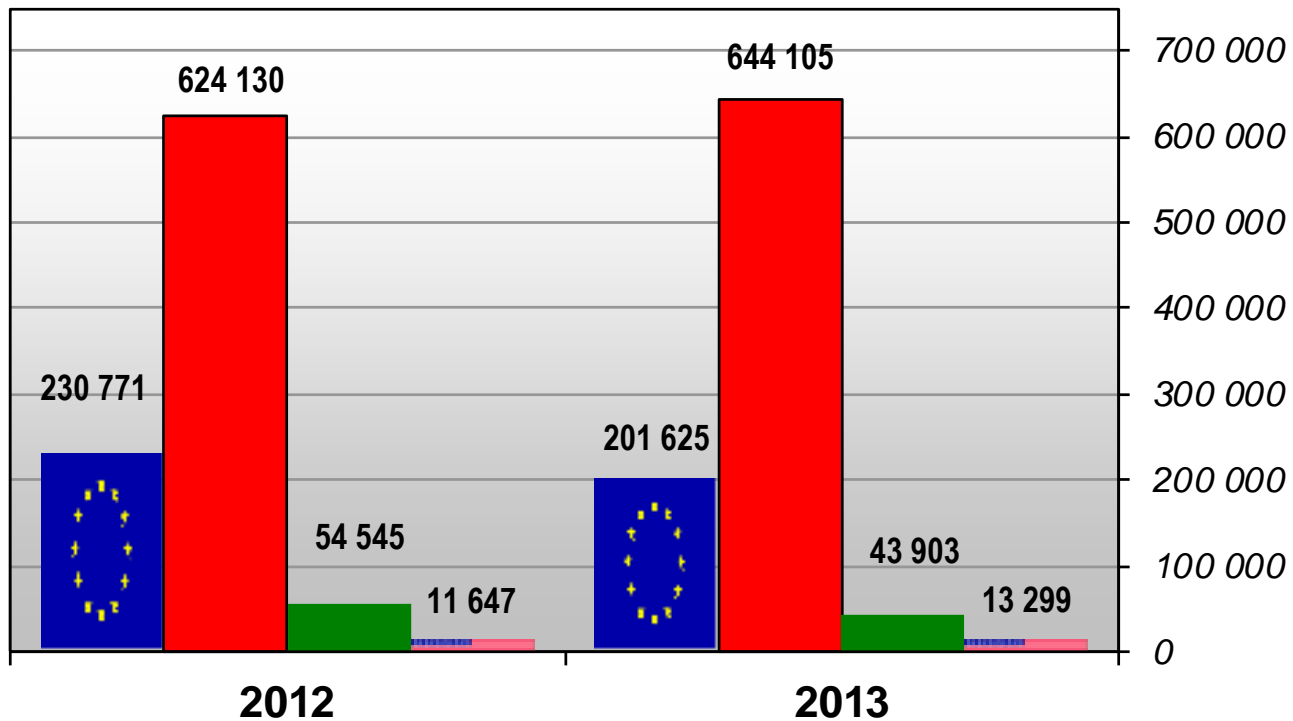
- EU-28 (Jan - Jun)
- New Zealand (Jan-Jun)
- Australia (Jan-Jun)
- United States (Jan-Jun)



Source: Eurostat Comext, Global Trade Information Service

WMP Exports

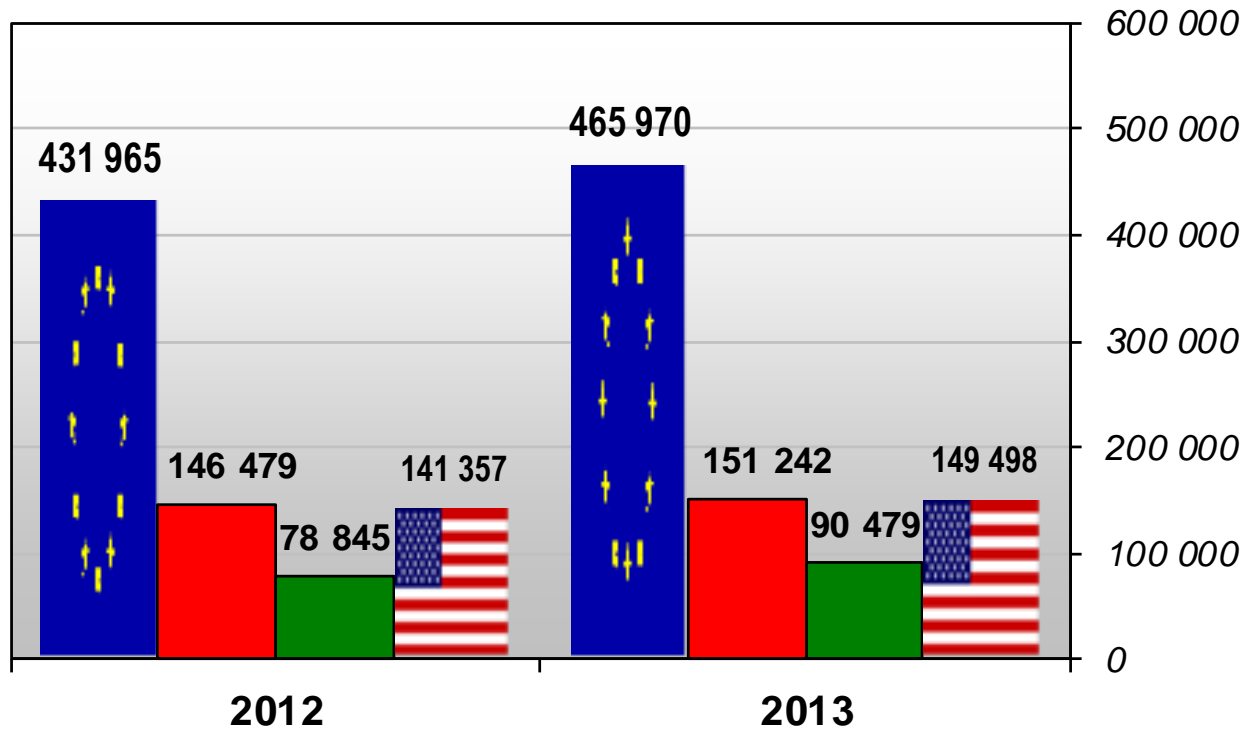
- EU-28 (Jan - Jun)
- New Zealand (Jan-Jun)
- Australia (Jan-Jun)
- United States (Jan-Jun)



Source: Eurostat Comext, Global Trade Information Service

CHEESES Exports

- EU-28 (Jan - Jun)
- New Zealand (Jan-Jun)
- Australia (Jan-Jun)
- United States (Jan-Jun)

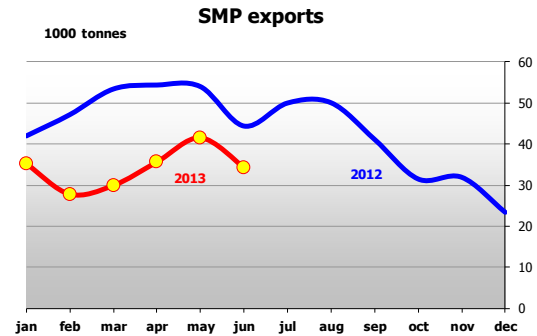
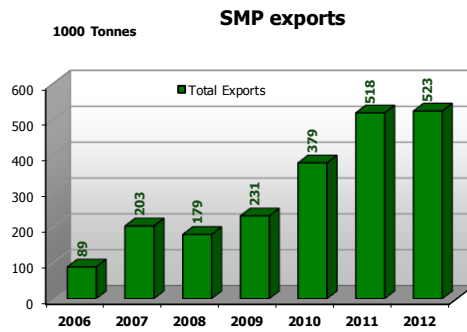
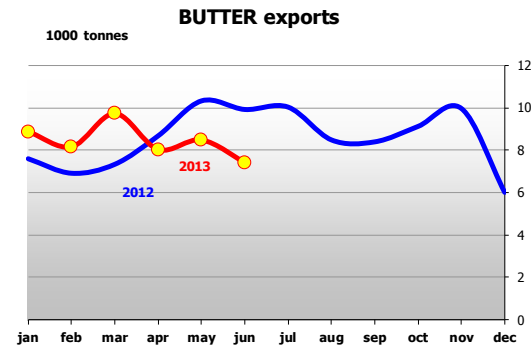
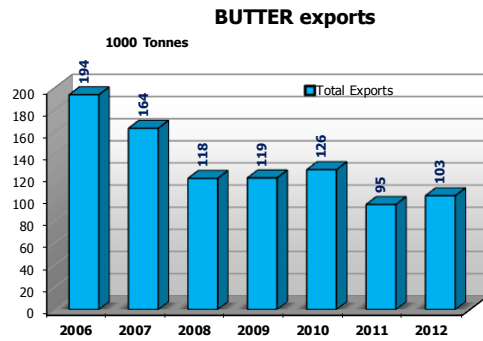


Source: Eurostat Comext, Global Trade Information Service



European
Commission

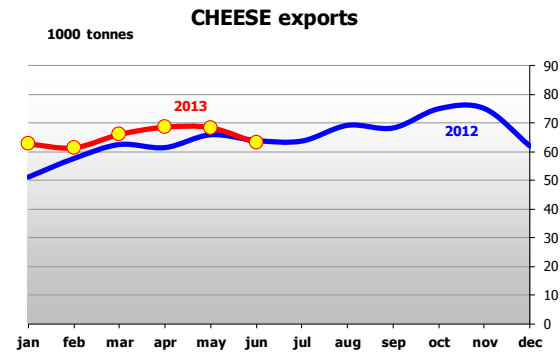
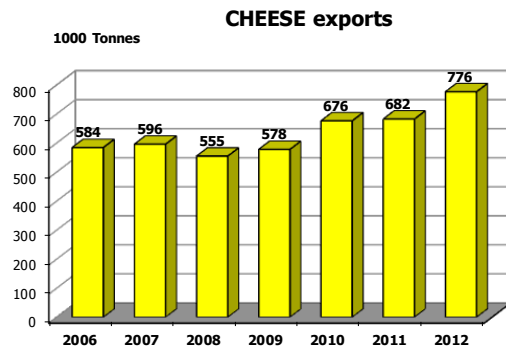
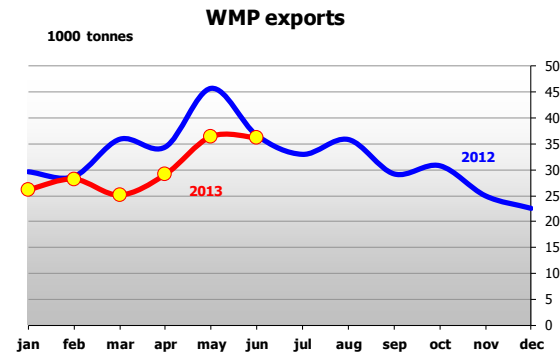
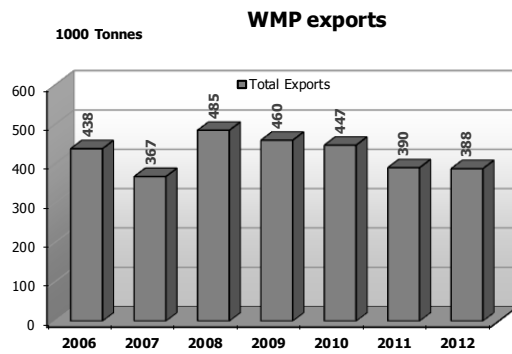
EU Exports (1/2)



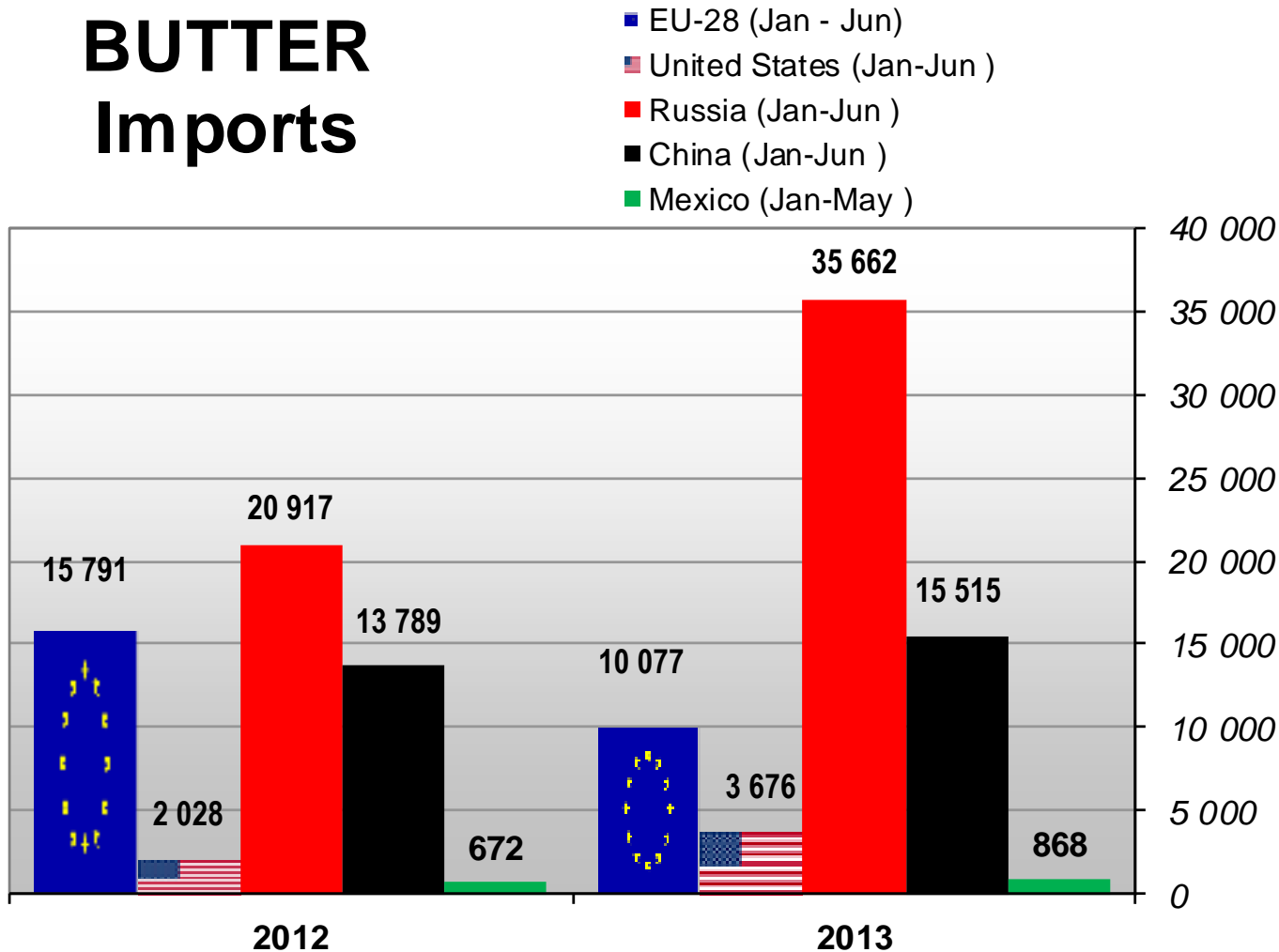


European
Commission

EU Exports (2/2)

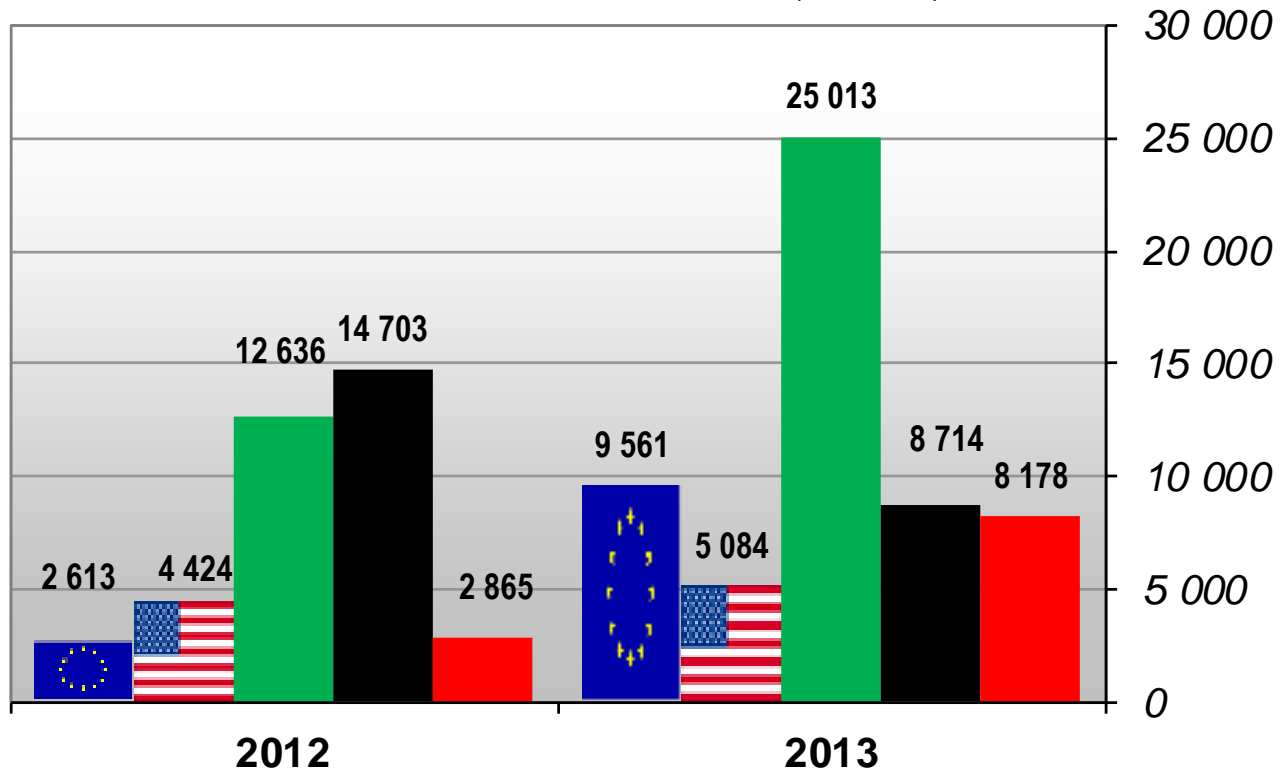


BUTTER Imports



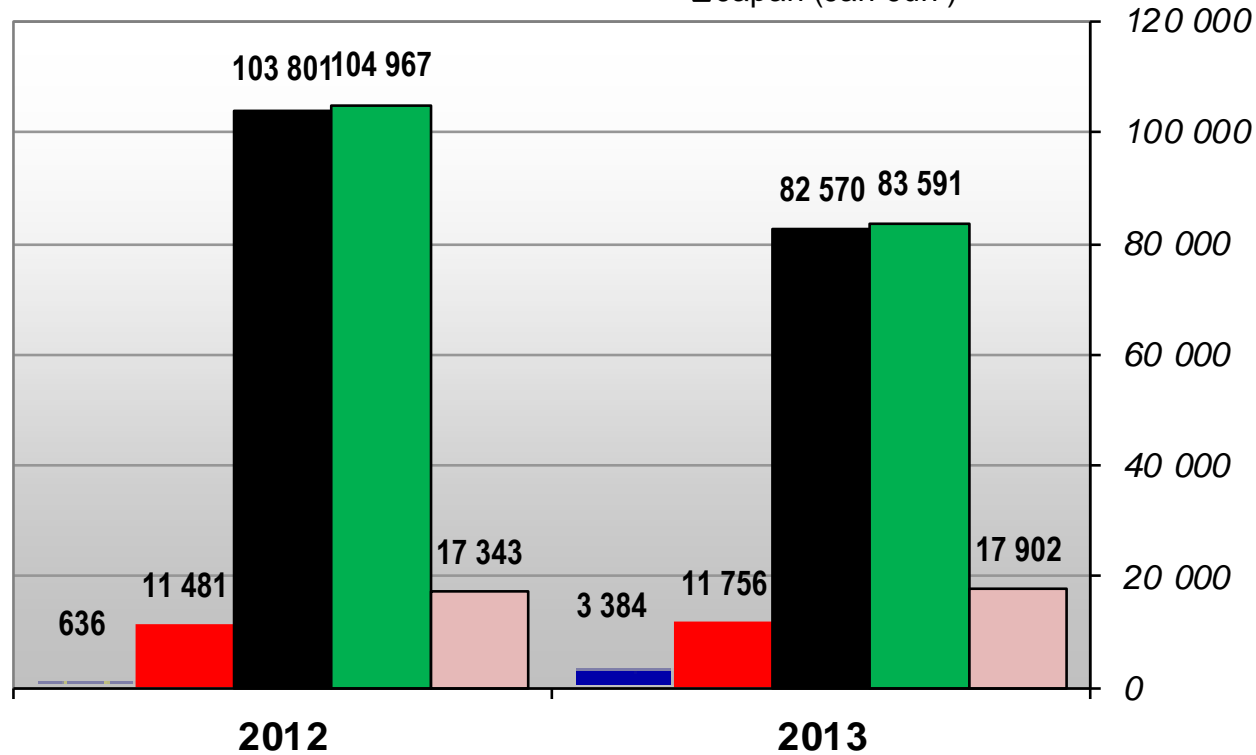
BUTTEROIL Imports

- EU-28 (Jan - Jun)
- United States (Jan-Jun)
- Mexico (Jan-May)
- China (Jan-Jun)
- Russia (Jan-Jun)



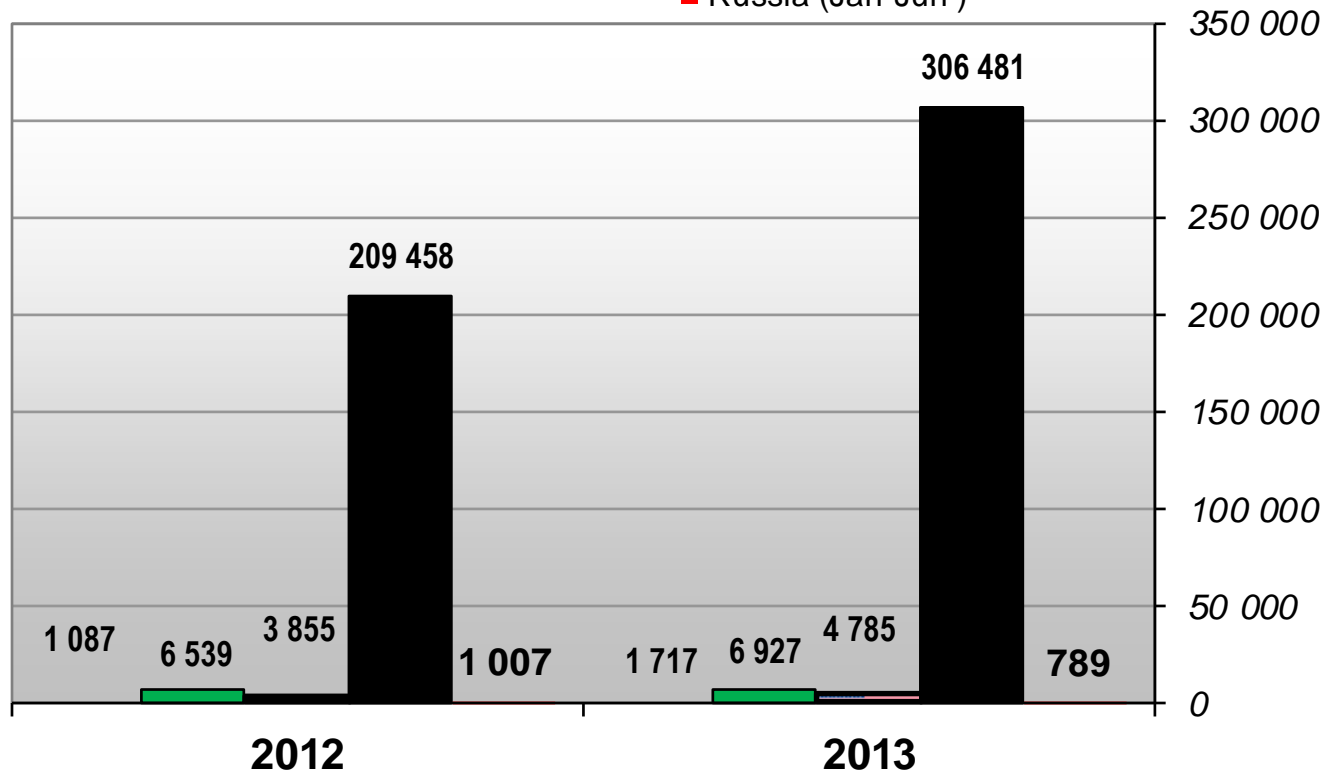
SMP Imports

- EU-28 (Jan - Jun)
- Russia (Jan-Jun)
- China (Jan-Jun)
- Mexico (Jan-May)
- Japan (Jan-Jun)



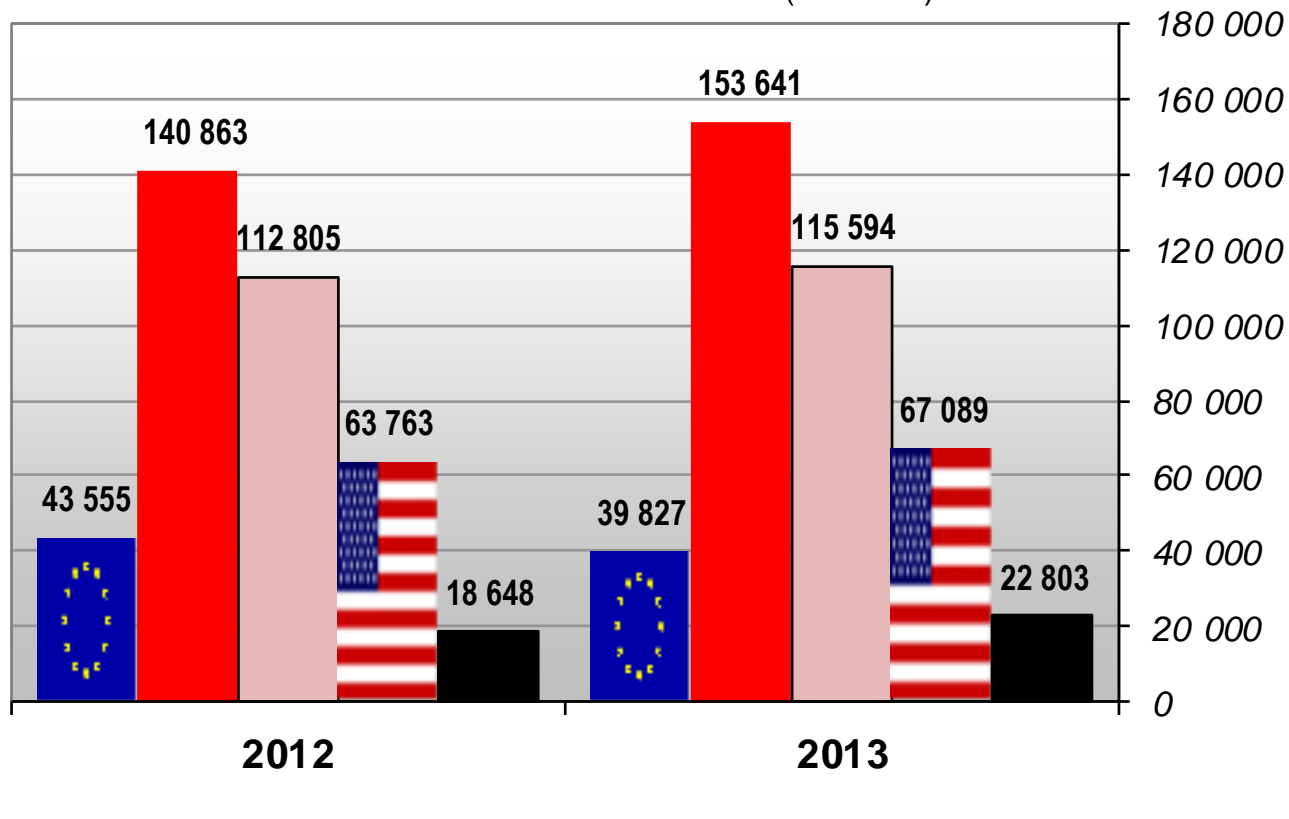
WMP Imports

- EU-28 (Jan - Jun)
- Mexico (Jan-May)
- United States (Jan-Jun)
- China (Jan-Jun)
- Russia (Jan-Jun)

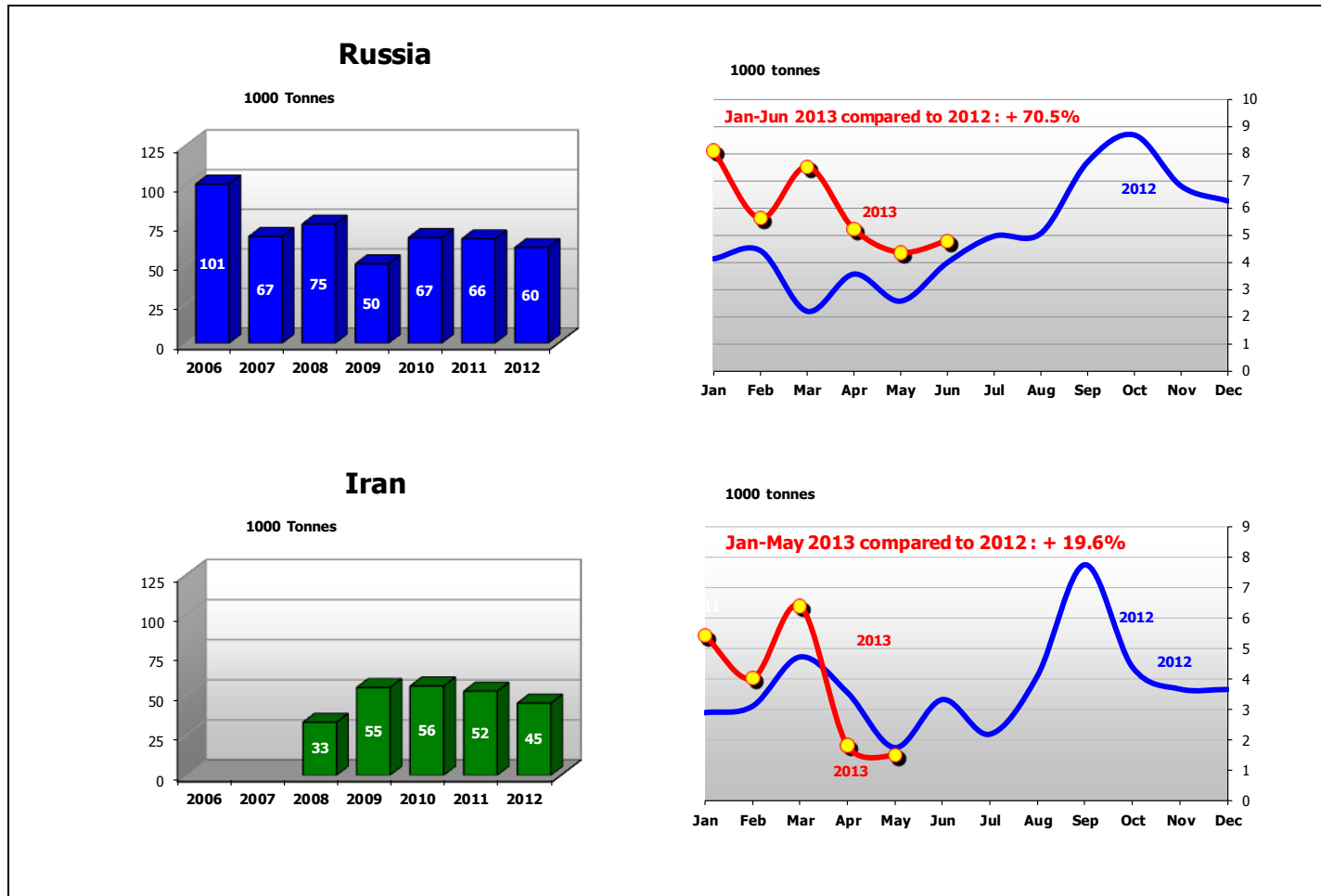


CHEESES Imports

- EU-28 (Jan - Jun)
- Russia (Jan-Jun)
- Japan (Jan-Jun)
- United States (Jan-Jun)
- China (Jan-Jun)

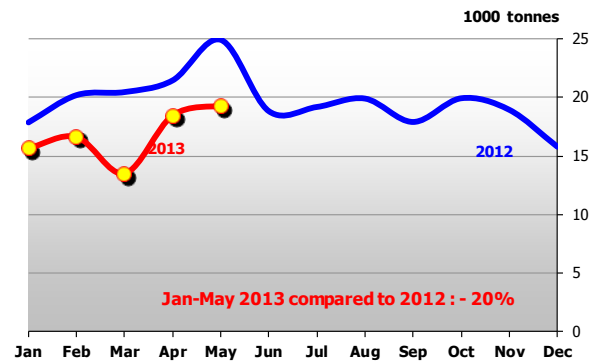
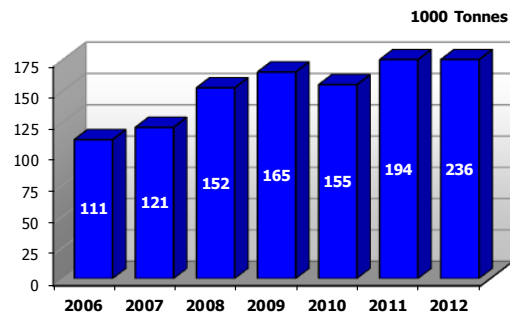


Main Dairy Importers (Butter)

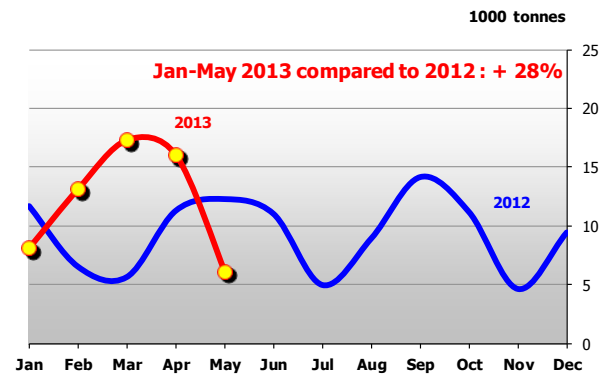
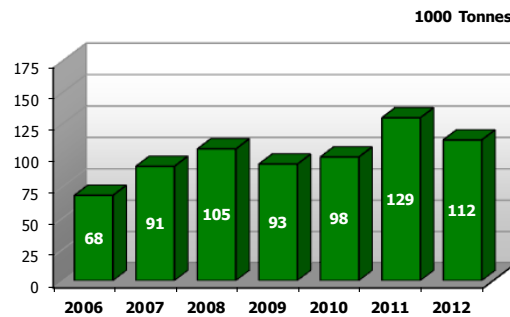


Main Dairy Importers (S.M.P. - 1/2)

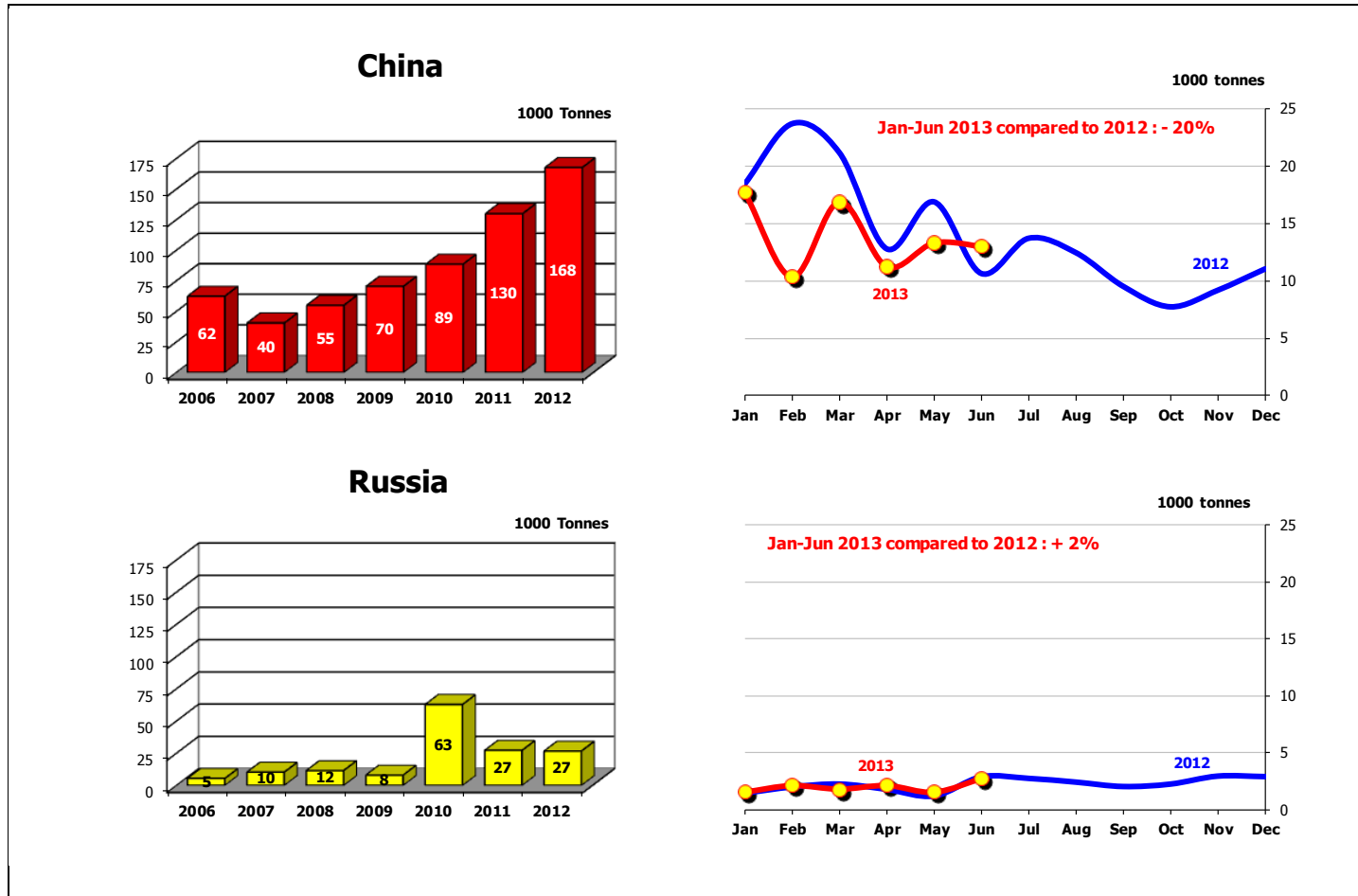
Mexico



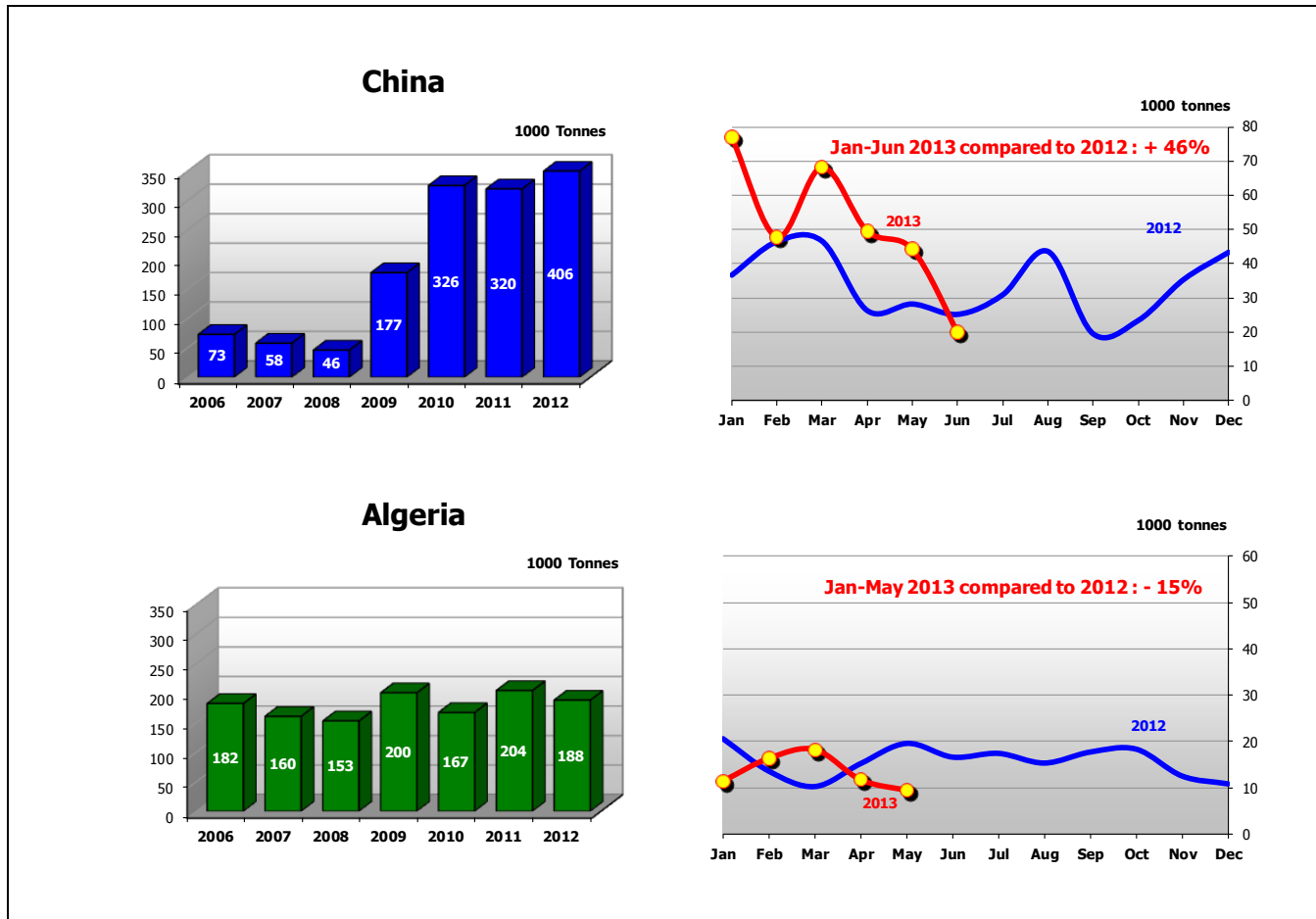
Algeria



Main Dairy Importers (S.M.P. – 2/2)

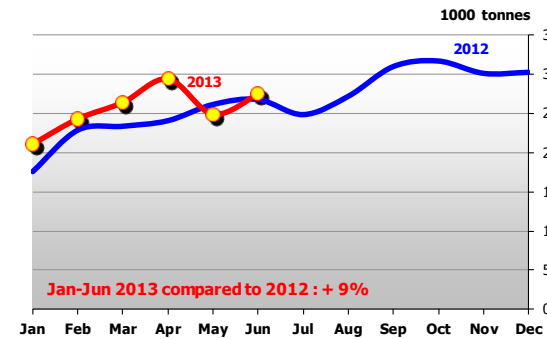
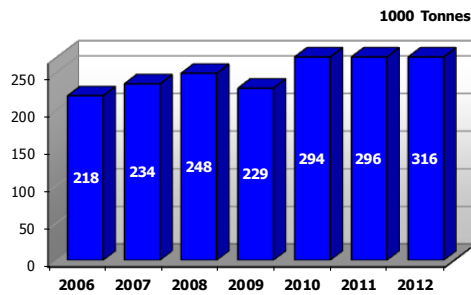


Main Dairy Importers (W.M.P.)

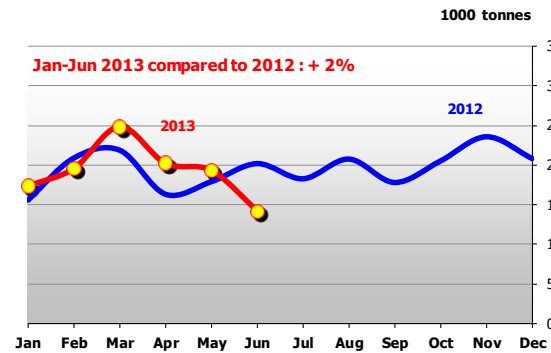
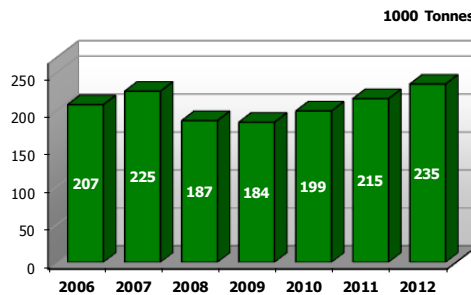


Main Dairy Importers (Cheese - 1/2)

Russia

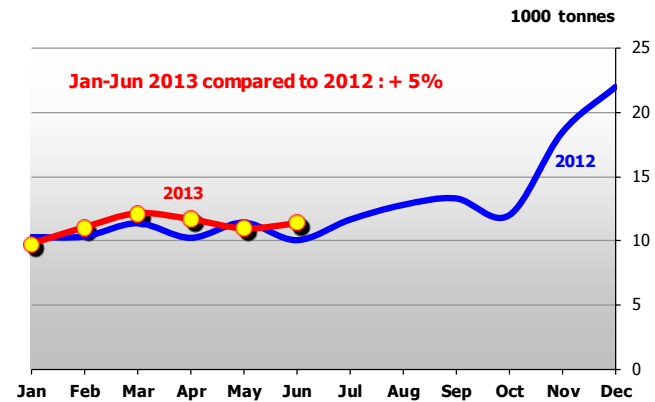
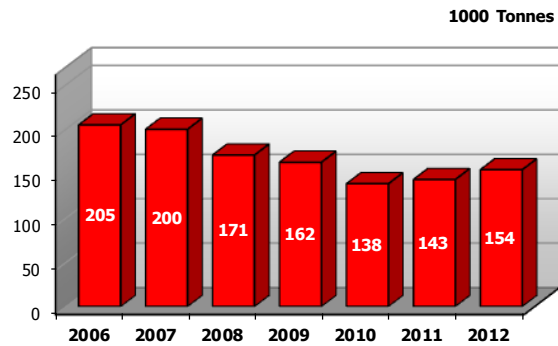


Japan

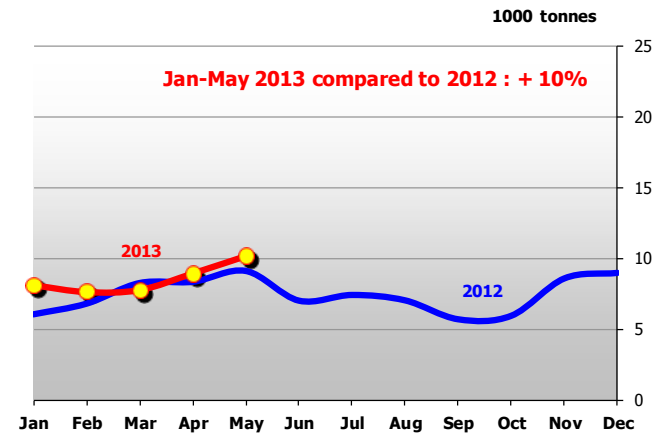
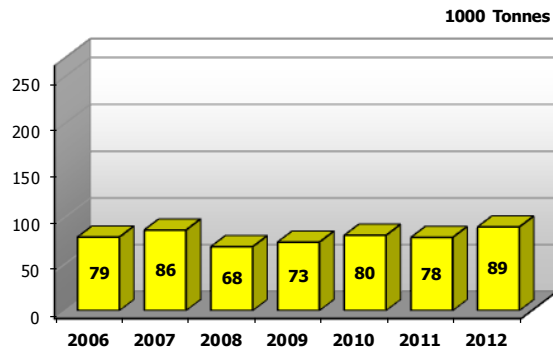


Main Dairy Importers (Cheese - 2/2)

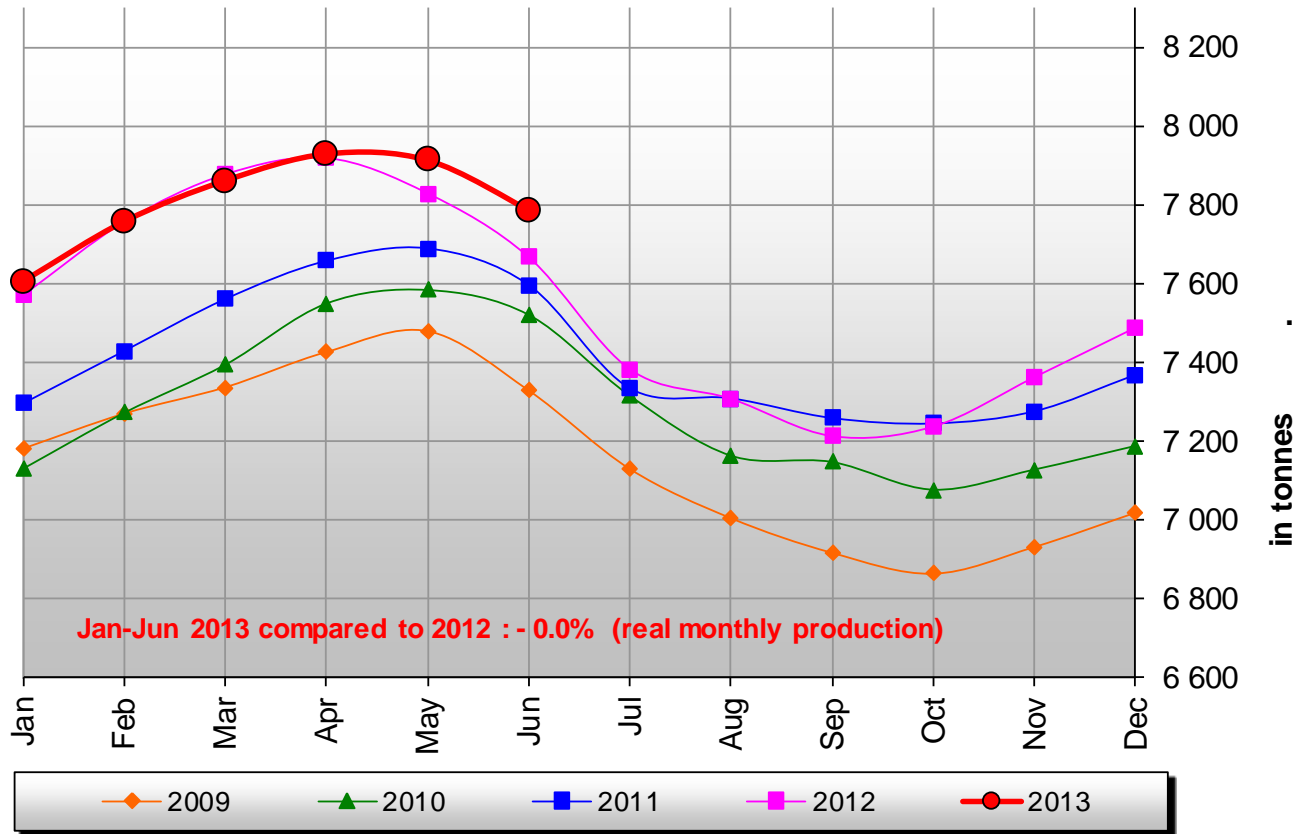
United States



Mexico

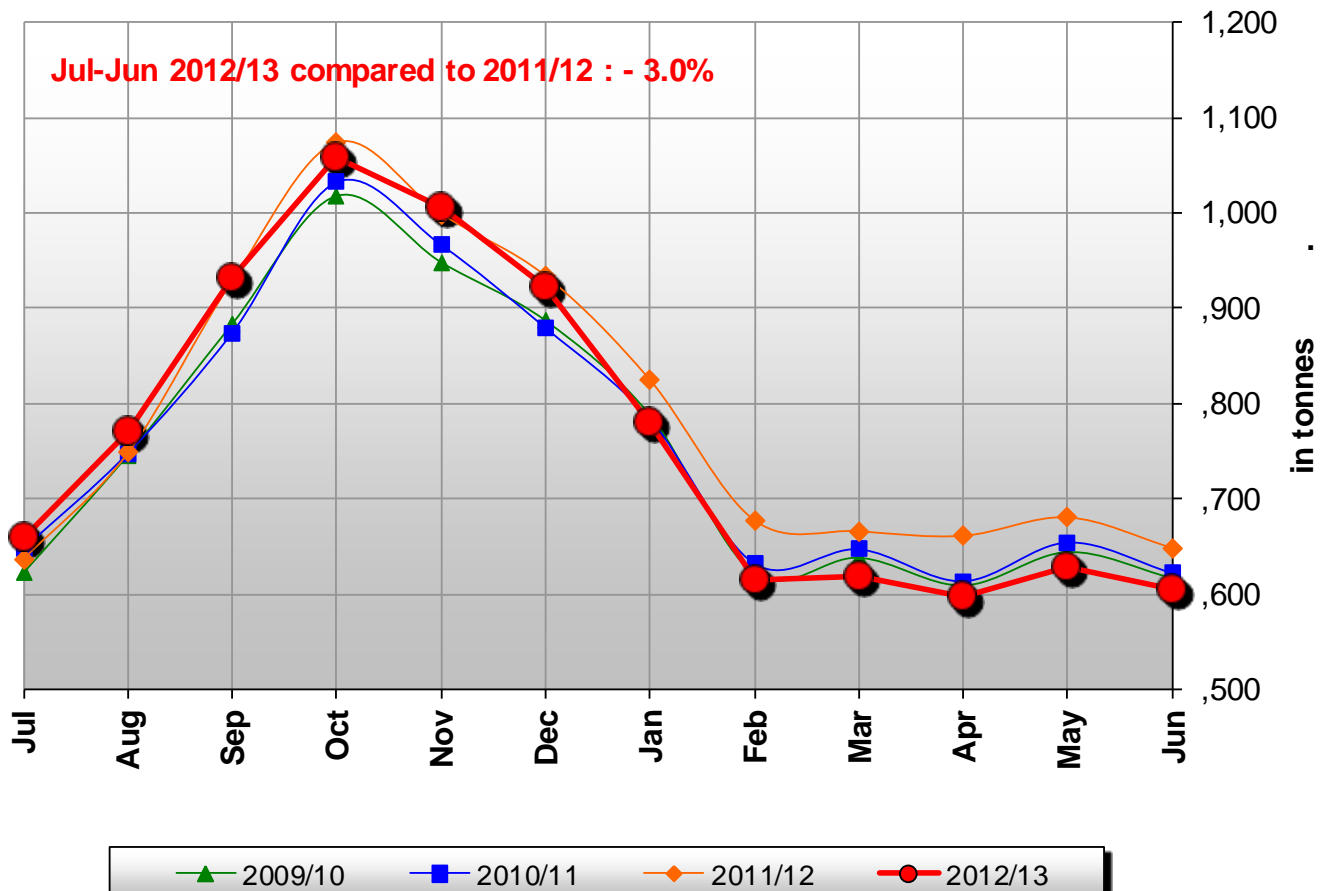


Adjusted U.S. milk production (months of constant length)

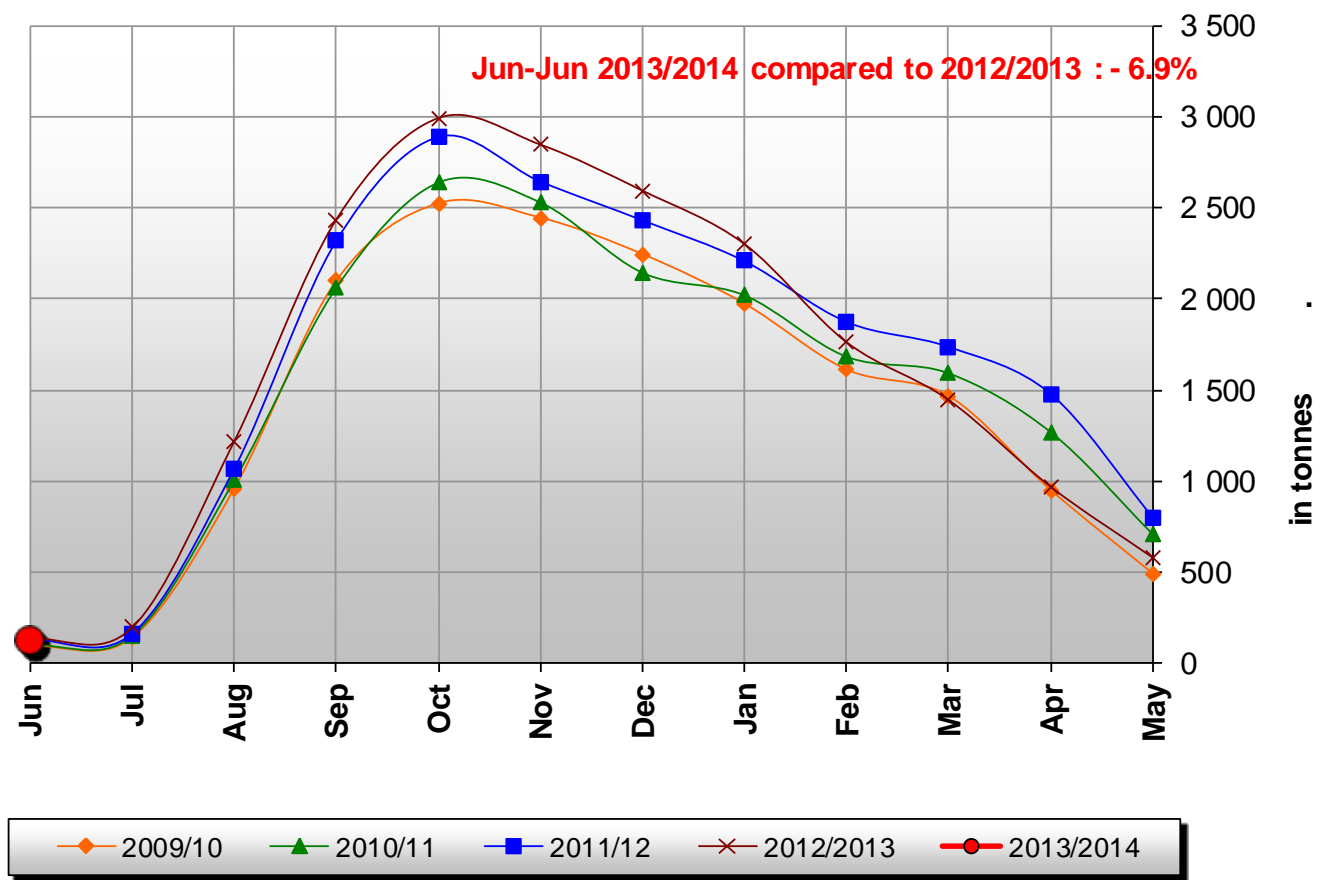


Source:USDA

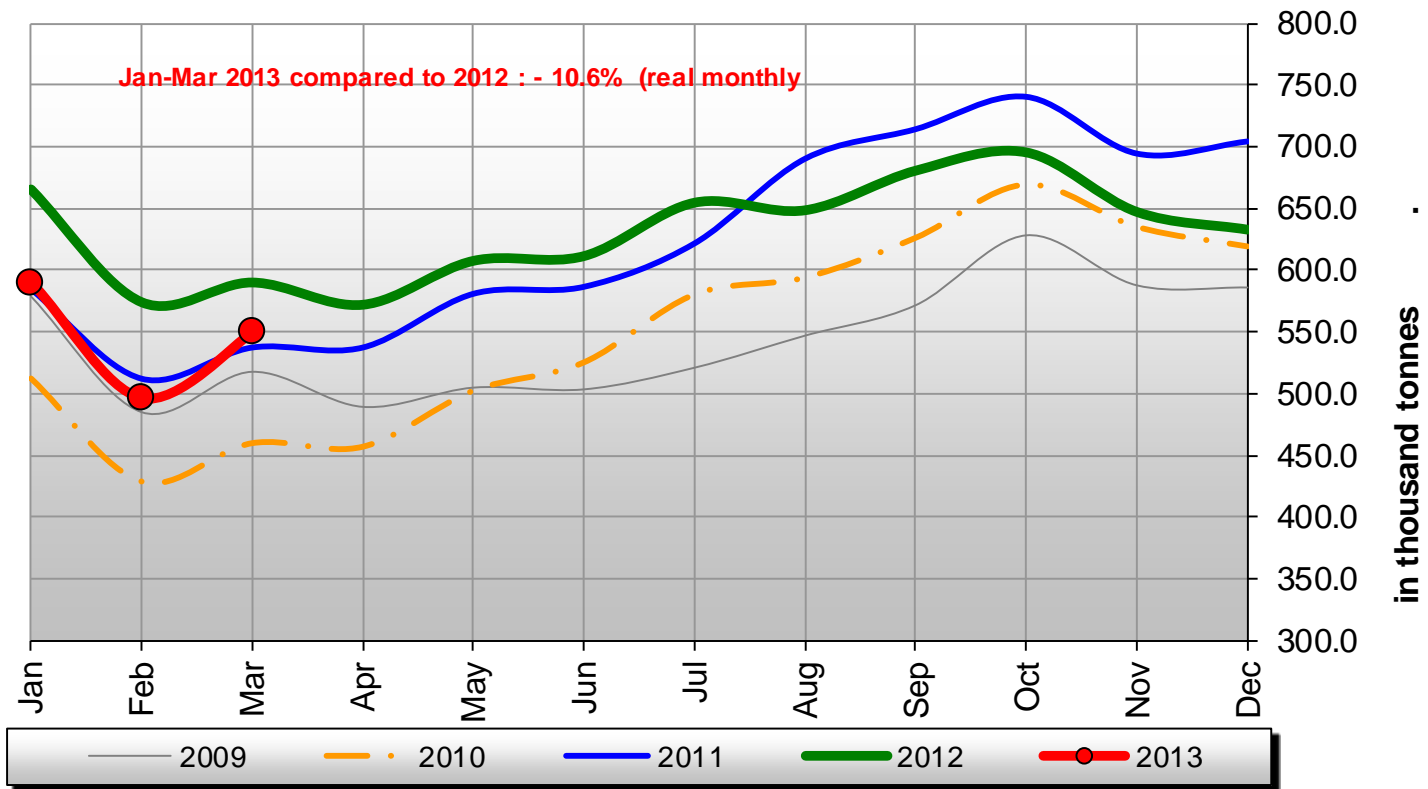
Australian milk production



NZ milk production



Monthly indicator of Argentina Milk Production



Source: Alimentos argentinos
Based on an enquiry covering 65 % of total production

Results of the GDT Auction of 20.08.2013

Prices

in US\$/t	Sep-13	Oct-13	Nov-13	Dec-13	Jan-14	Feb-14	Mar-14	Apr-14	Weighted average price	% change	% change by contract from previous auction							
											Sep-13	Oct-13	Nov-13	Dec-13	Jan-14	Feb-14	Mar-14	Apr-14
AMF	n.a.	5 011	4 990	4 923	4 771	4 820	n.a.	n.a.	4 931	+ 6.9%		+ 6.5%	+ 7.9%	+ 6.2%	+ 6.6%	+ 11.0%		
Butter	3 515	3 675	3 552	3 590	n.a.	n.a.	n.a.	n.a.	3 614	+ 3.3%	- 4.4%	+ 9.5%	- 0.8%	- 4.5%				
BMP	n.a.	4 660	4 680	4 755	n.a.	n.a.	n.a.	n.a.	4 689	+ 1.0%		- 4.0%	- 4.9%	+ 1.0%				
Cheeses	n.a.	4 535	4 380	4 306	n.a.	n.a.	n.a.	n.a.	4 375	+ 0.9%		- 1.0%	+ 1.8%	+ 0.4%				
MPC70	n.a.	8 170	7 730	7 735	n.a.	n.a.	n.a.	n.a.	7 828	+ 1.0%		+ 0.4%	+ 3.1%	+ 0.5%				
Rennet Casein	n.a.	10 126	10 122	9 977	n.a.	n.a.	n.a.	n.a.	10 085	+ 1.8%		+ 1.9%	+ 2.1%	+ 1.4%				
Lactose	n.a.	n.a.	n.a.	n.a.	n.a.	n.a.	n.a.	n.a.	n.a.									
SMP	4 408	4 349	4 440	4 556	4 601	n.a.	n.a.	n.a.	4 426	- 0.6%	+ 9.2%	- 2.6%	+ 0.6%	- 2.7%	- 0.5%			
WMP	4 005	5 188	5 084	5 110	5 086	5 073	n.a.	n.a.	5 124	+ 2.0%	- 27.8%	+ 4.5%	+ 1.8%	+ 1.2%	+ 1.6%	+ 0.8%		

20/08/2013

1 € = 1.3340 \$ (ECB rate)

in €/t	Sep-13	Oct-13	Nov-13	Dec-13	Jan-14	Feb-14	Mar-14	Apr-14	Weighted average price
AMF		3 756	3 741	3 691	3 577	3 613			3 697
Butter	2 635	2 755	2 663	2 691					2 709
BMP		3 493	3 508	3 564					3 515
Cheese		3 400	3 283	3 228					3 280
MPC70		6 124	5 795	5 798					5 868
Rennet Casein		7 591	7 587	7 479					7 560
Lactose									7 424
SMP	3 304	3 260	3 328	3 416	3 449				3 318
WMP	3 002	3 889	3 811	3 831	3 813	3 803			3 841

Source : <http://www.globaldairytrade.info/>